



VA0D2 Monoclonal Antibody

Catalog No	YP-mAb-06380
Isotype	IgG
Reactivity	Human;Rat;Mouse
Applications	WB
Gene Name	ATP6V0D2
Protein Name	V-type proton ATPase subunit d 2 (V-ATPase subunit d 2) (Vacuolar proton pump subunit d 2)
Immunogen	Synthesized peptide derived from part region of human protein
Specificity	VA0D2 Monoclonal Antibody detects endogenous levels of protein.
Formulation	Liquid in PBS containing 50% glycerol, and 0.02% sodium azide.
Source	Monoclonal, Mouse,IgG
Purification	The antibody was affinity-purified from mouse antiserum by affinity-chromatography using epitope-specific immunogen.
Dilution	WB 1:500-1:2000
Concentration	1 mg/ml
Purity	≥90%
Storage Stability	-20°C/1 year
Synonyms	
Observed Band	38kD
Cell Pathway	lysosomal membrane,early endosome,endosome membrane,membrane,apical plasma membrane,vacuolar proton-transporting V-type ATPase complex,phagocytic vesicle membrane,proton-transporting V-type ATPase, V0 domain,plasma membrane proton-transporting V
Tissue Specificity	Kidney, osteoclast and lung.
Function	function:Subunit of the integral membrane V0 complex of vacuolar ATPase. Vacuolar ATPase is responsible for acidifying a variety of intracellular compartments in eukaryotic cells, thus providing most of the energy required for transport processes in the vacuolar system. May play a role in coupling of proton transport and ATP hydrolysis.,similarity:Belongs to the V-ATPase V0D/AC39 subunit family.,subunit:V-ATPase is an heteromultimeric enzyme composed of a peripheral catalytic V1 complex (components A to H) attached to an integral membrane V0 proton pore complex (components: a, c, c', c'' and d).,tissue specificity:Kidney, osteoclast and lung.,
Background	function:Subunit of the integral membrane V0 complex of vacuolar ATPase. Vacuolar ATPase is responsible for acidifying a variety of intracellular compartments in eukaryotic cells, thus providing most of the energy required for transport processes in the vacuolar system. May play a role in coupling of proton



transport and ATP hydrolysis.,similarity:Belongs to the V-ATPase V0D/AC39 subunit family.,subunit:V-ATPase is an heteromultimeric enzyme composed of a peripheral catalytic V1 complex (components A to H) attached to an integral membrane V0 proton pore complex (components: a, c, c', c" and d).,tissue specificity:Kidney, osteoclast and lung.,

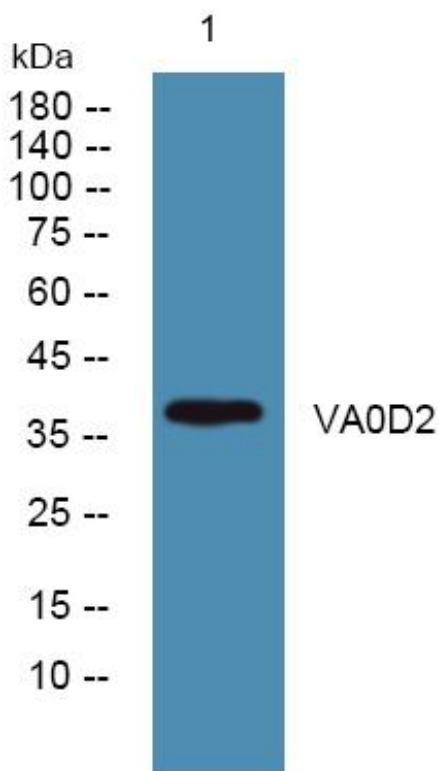
matters needing attention

Avoid repeated freezing and thawing!

Usage suggestions

This product can be used in immunological reaction related experiments. For more information, please consult technical personnel.

Products Images



Western Blot analysis of various cells using VA0D2 Monoclonal Antibody