

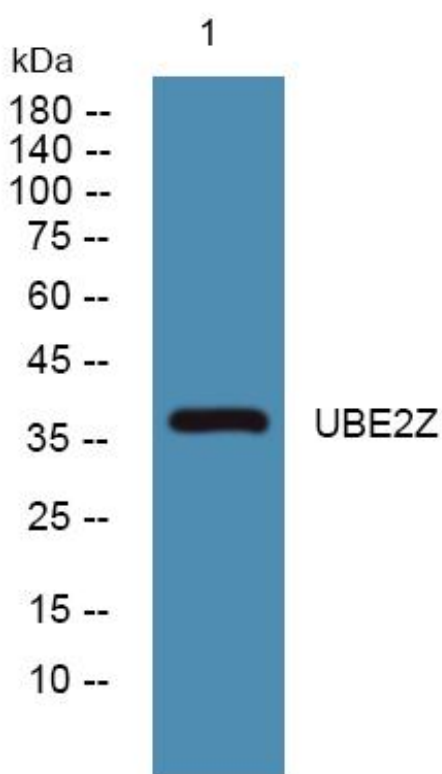


UBE2Z Monoclonal Antibody

Catalog No	YP-mAb-06370
Isotype	IgG
Reactivity	Human;Rat;Mouse
Applications	WB
Gene Name	UBE2Z HOYS7
Protein Name	Ubiquitin-conjugating enzyme E2 Z (EC 6.3.2.19) (Uba6-specific E2 conjugating enzyme 1) (Use1) (Ubiquitin carrier protein Z) (Ubiquitin-protein ligase Z)
Immunogen	Synthesized peptide derived from part region of human protein
Specificity	UBE2Z Monoclonal Antibody detects endogenous levels of protein.
Formulation	Liquid in PBS containing 50% glycerol, and 0.02% sodium azide.
Source	Monoclonal, Mouse,IgG
Purification	The antibody was affinity-purified from mouse antiserum by affinity-chromatography using epitope-specific immunogen.
Dilution	WB 1:500-1:2000
Concentration	1 mg/ml
Purity	≥90%
Storage Stability	-20°C/1 year
Synonyms	
Observed Band	38kD
Cell Pathway	Cytoplasm . Nucleus .
Tissue Specificity	Widely expressed. Highly in placenta, pancreas, spleen and testis.
Function	catalytic activity:ATP + ubiquitin + protein lysine = AMP + diphosphate + protein N-ubiquityllysine.,function:Catalyzes the covalent attachment of ubiquitin to other proteins (By similarity). Specific substrate for UBE1L2, not charged with ubiquitin by UBE1. May be involved in apoptosis regulation.,pathway:Protein modification; protein ubiquitination.,similarity:Belongs to the ubiquitin-conjugating enzyme family.,tissue specificity:Widely expressed. Highly in placenta, pancreas, spleen and testis.,
Background	This gene encodes an enzyme which ubiquitinates proteins which participate in signaling pathways and apoptosis. [provided by RefSeq, Feb 2012],
matters needing attention	Avoid repeated freezing and thawing!

**Usage suggestions**

This product can be used in immunological reaction related experiments. For more information, please consult technical personnel.

Products Images

Western Blot analysis of various cells using UBE2Z Monoclonal Antibody