

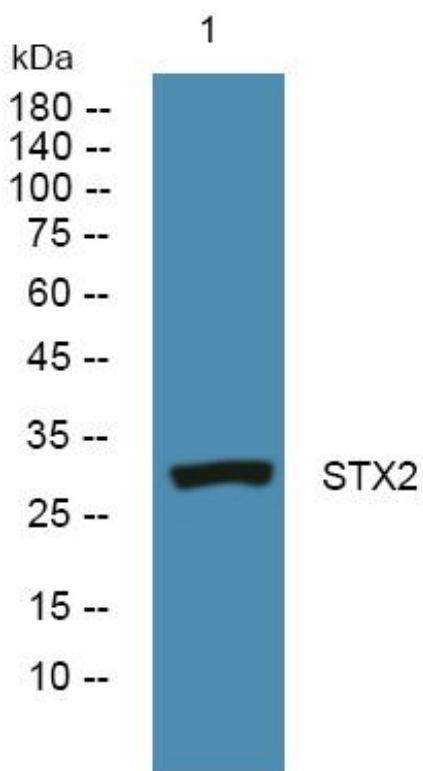


STX2 Monoclonal Antibody

Catalog No	YP-mAb-06265
Isotype	IgG
Reactivity	Human;Rat;Mouse
Applications	WB
Gene Name	STX2 EPIM STX2A STX2B STX2C
Protein Name	Syntaxin-2 (Epimorphin)
Immunogen	Synthesized peptide derived from part region of human protein
Specificity	STX2 Monoclonal Antibody detects endogenous levels of protein.
Formulation	Liquid in PBS containing 50% glycerol, and 0.02% sodium azide.
Source	Monoclonal, Mouse,IgG
Purification	The antibody was affinity-purified from mouse antiserum by affinity-chromatography using epitope-specific immunogen.
Dilution	WB 1:500-1:2000
Concentration	1 mg/ml
Purity	≥90%
Storage Stability	-20°C/1 year
Synonyms	
Observed Band	31kD
Cell Pathway	Membrane; Single-pass type IV membrane protein.
Tissue Specificity	Testis,
Function	alternative products:Additional isoforms seem to exist,function:Essential for epithelial morphogenesis.,similarity:Belongs to the syntaxin family.,similarity:Contains 1 t-SNARE coiled-coil homology domain.,
Background	The product of this gene belongs to the syntaxin/epimorphin family of proteins. The syntaxins are a large protein family implicated in the targeting and fusion of intracellular transport vesicles. The product of this gene regulates epithelial-mesenchymal interactions and epithelial cell morphogenesis and activation. Alternatively spliced transcript variants encoding different isoforms have been identified. [provided by RefSeq, Jul 2008],
matters needing attention	Avoid repeated freezing and thawing!

**Usage suggestions**

This product can be used in immunological reaction related experiments. For more information, please consult technical personnel.

Products Images

Western Blot analysis of various cells using STX2 Monoclonal Antibody