



# CCL25 Monoclonal Antibody

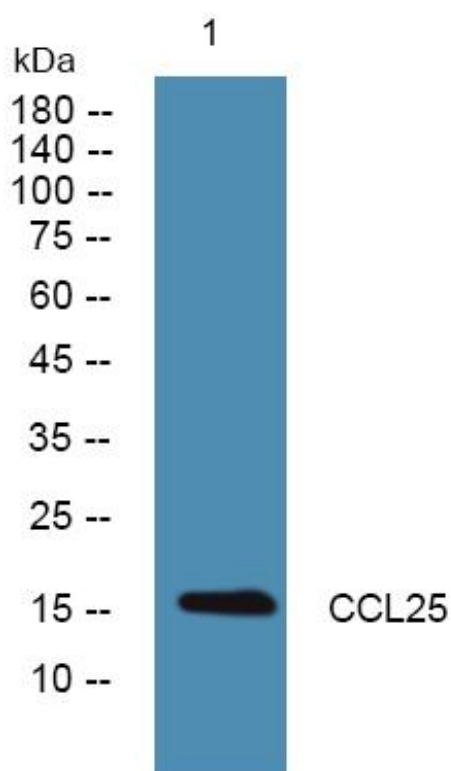
<b>Catalog No</b>	YP-mAb-06191
<b>Isotype</b>	IgG
<b>Reactivity</b>	Human;Mouse
<b>Applications</b>	WB
<b>Gene Name</b>	CCL25 SCYA25 TECK
<b>Protein Name</b>	C-C motif chemokine 25 (Chemokine TECK) (Small-inducible cytokine A25) (Thymus-expressed chemokine)
<b>Immunogen</b>	Synthesized peptide derived from human protein . at AA range: 30-110
<b>Specificity</b>	CCL25 Monoclonal Antibody detects endogenous levels of protein.
<b>Formulation</b>	Liquid in PBS containing 50% glycerol, and 0.02% sodium azide.
<b>Source</b>	Monoclonal, Mouse,IgG
<b>Purification</b>	The antibody was affinity-purified from mouse antiserum by affinity-chromatography using epitope-specific immunogen.
<b>Dilution</b>	WB 1:500-1:2000
<b>Concentration</b>	1 mg/ml
<b>Purity</b>	≥90%
<b>Storage Stability</b>	-20°C/1 year
<b>Synonyms</b>	
<b>Observed Band</b>	16kD
<b>Cell Pathway</b>	Secreted.
<b>Tissue Specificity</b>	Specifically expressed by thymic dendritic cells. High levels in thymus and small intestine.
<b>Function</b>	function:Potentially involved in T-cell development. Recombinant protein shows chemotactic activity on thymocytes, macrophages, THP-1 cells, and dendritic cells but is inactive on peripheral blood lymphocytes and neutrophils. Binds to CCR9. Isoform 2 is an antagonist of isoform 1.,online information:CCL25 entry,similarity:Belongs to the intercrine beta (chemokine CC) family.,tissue specificity:Specifically expressed by thymic dendritic cells. High levels in thymus and small intestine.,
<b>Background</b>	This antimicrobial gene belongs to the subfamily of small cytokine CC genes. Cytokines are a family of secreted proteins involved in immunoregulatory and inflammatory processes. The CC cytokines are proteins characterized by two adjacent cysteines. The cytokine encoded by this gene displays chemotactic activity for dendritic cells, thymocytes, and activated macrophages but is inactive on peripheral blood lymphocytes and neutrophils. The product of this gene binds to chemokine receptor CCR9. Alternative splicing results in multiple transcript variants. [provided by RefSeq, Sep 2014],

**matters needing attention**

Avoid repeated freezing and thawing!

**Usage suggestions**

This product can be used in immunological reaction related experiments. For more information, please consult technical personnel.

**Products Images**

Western Blot analysis of various cells using CCL25 Monoclonal Antibody