

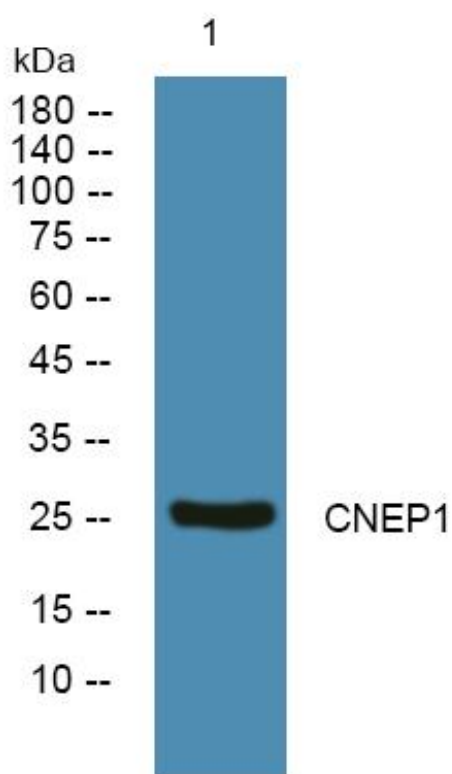


CNEP1 Monoclonal Antibody

Catalog No	YP-mAb-06154
Isotype	IgG
Reactivity	Human;Rat;Mouse
Applications	WB
Gene Name	CTDNEP1 DULLARD
Protein Name	CTD nuclear envelope phosphatase 1 (EC 3.1.3.16) (Serine/threonine-protein phosphatase dullard)
Immunogen	Synthesized peptide derived from human protein . at AA range: 100-180
Specificity	CNEP1 Monoclonal Antibody detects endogenous levels of protein.
Formulation	Liquid in PBS containing 50% glycerol, and 0.02% sodium azide.
Source	Monoclonal, Mouse,IgG
Purification	The antibody was affinity-purified from mouse antiserum by affinity-chromatography using epitope-specific immunogen.
Dilution	WB 1:500-1:2000
Concentration	1 mg/ml
Purity	≥90%
Storage Stability	-20°C/1 year
Synonyms	
Observed Band	26kD
Cell Pathway	Endoplasmic reticulum membrane; Single-pass membrane protein. Nucleus membrane; Single-pass membrane protein.
Tissue Specificity	Muscle specific with lower expression in other metabolic tissues.
Function	catalytic activity:A phosphoprotein + H(2)O = a protein + phosphate.,function:Serine/threonine phosphatase which may be required for proper nuclear membrane morphology. Involved in LPIN1 dephosphorylation. May antagonize BMP signaling.,similarity:Belongs to the dullard family.,similarity:Contains 1 FCP1 homology domain.,
Background	catalytic activity:A phosphoprotein + H(2)O = a protein + phosphate.,function:Serine/threonine phosphatase which may be required for proper nuclear membrane morphology. Involved in LPIN1 dephosphorylation. May antagonize BMP signaling.,similarity:Belongs to the dullard family.,similarity:Contains 1 FCP1 homology domain.,
matters needing attention	Avoid repeated freezing and thawing!

**Usage suggestions**

This product can be used in immunological reaction related experiments. For more information, please consult technical personnel.

Products Images

Western Blot analysis of various cells using CNEP1 Monoclonal Antibody