



# SGK2 Monoclonal Antibody

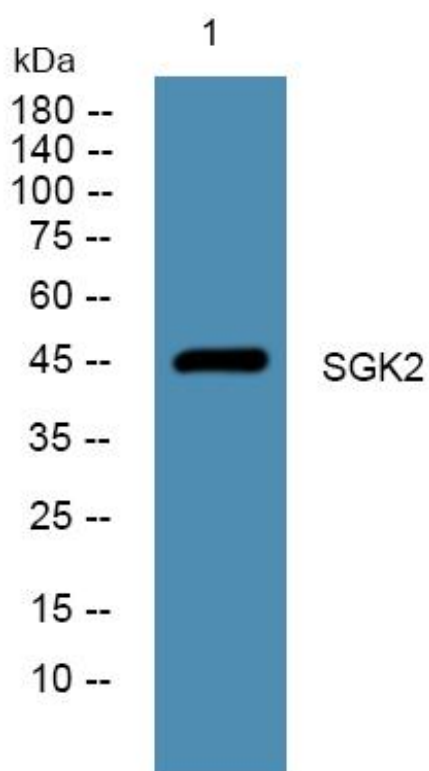
<b>Catalog No</b>	YP-mAb-06139
<b>Isotype</b>	IgG
<b>Reactivity</b>	Human;Rat;Mouse
<b>Applications</b>	WB
<b>Gene Name</b>	SGK2
<b>Protein Name</b>	Serine/threonine-protein kinase Sgk2 (EC 2.7.11.1) (Serum/glucocorticoid-regulated kinase 2)
<b>Immunogen</b>	Synthesized peptide derived from part region of human protein
<b>Specificity</b>	SGK2 Monoclonal Antibody detects endogenous levels of protein.
<b>Formulation</b>	Liquid in PBS containing 50% glycerol, and 0.02% sodium azide.
<b>Source</b>	Monoclonal, Mouse,IgG
<b>Purification</b>	The antibody was affinity-purified from mouse antiserum by affinity-chromatography using epitope-specific immunogen.
<b>Dilution</b>	WB 1:500-1:2000
<b>Concentration</b>	1 mg/ml
<b>Purity</b>	≥90%
<b>Storage Stability</b>	-20°C/1 year
<b>Synonyms</b>	
<b>Observed Band</b>	46kD
<b>Cell Pathway</b>	Cytoplasm . Nucleus .
<b>Tissue Specificity</b>	Highly expressed in liver, kidney and pancreas, and at lower levels in brain.
<b>Function</b>	catalytic activity:ATP + a protein = ADP + a phosphoprotein.,caution:Not regulated by serum or glucocorticoids.,enzyme regulation:Two specific sites, one in the kinase domain (Thr-253) and the other in the C-terminal regulatory region (Ser-416), need to be phosphorylated for its full activation.,function:Involved in the activation of potassium channels.,similarity:Belongs to the protein kinase superfamily.,similarity:Belongs to the protein kinase superfamily. AGC Ser/Thr protein kinase family.,similarity:Contains 1 AGC-kinase C-terminal domain.,similarity:Contains 1 protein kinase domain.,tissue specificity:Highly expressed in liver, kidney and pancreas, and at lower levels in brain.,
<b>Background</b>	This gene encodes a serine/threonine protein kinase. Although this gene product is similar to serum- and glucocorticoid-induced protein kinase (SGK), this gene is not induced by serum or glucocorticoids. This gene is induced in response to signals that activate phosphatidylinositol 3-kinase, which is also true for SGK. Alternative splicing results in multiple transcript variants. [provided by RefSeq, Nov 2010],

**matters needing attention**

Avoid repeated freezing and thawing!

**Usage suggestions**

This product can be used in immunological reaction related experiments. For more information, please consult technical personnel.

**Products Images**

Western Blot analysis of various cells using SGK2 Monoclonal Antibody