



# STK40 Monoclonal Antibody

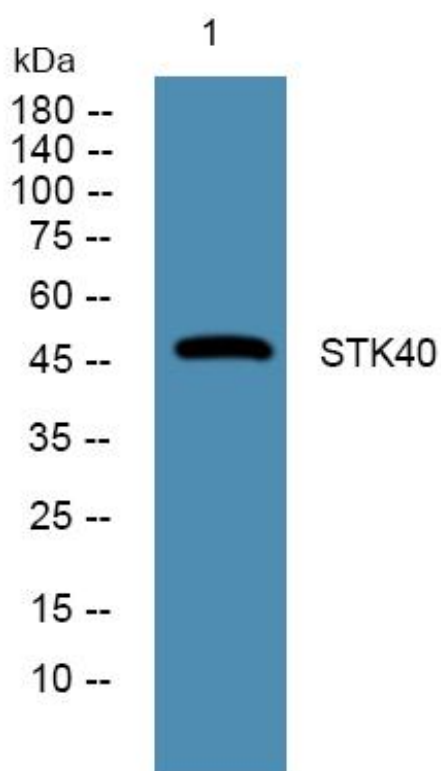
<b>Catalog No</b>	YP-mAb-06129
<b>Isotype</b>	IgG
<b>Reactivity</b>	Human;Rat;Mouse
<b>Applications</b>	WB
<b>Gene Name</b>	STK40 SGK495 SHIK
<b>Protein Name</b>	Serine/threonine-protein kinase 40 (EC 2.7.11.1) (SINK-homologous serine/threonine-protein kinase) (Sugen kinase 495) (SgK495)
<b>Immunogen</b>	Synthesized peptide derived from human protein . at AA range: 30-110
<b>Specificity</b>	STK40 Monoclonal Antibody detects endogenous levels of protein.
<b>Formulation</b>	Liquid in PBS containing 50% glycerol, and 0.02% sodium azide.
<b>Source</b>	Monoclonal, Mouse,IgG
<b>Purification</b>	The antibody was affinity-purified from mouse antiserum by affinity-chromatography using epitope-specific immunogen.
<b>Dilution</b>	WB 1:500-1:2000
<b>Concentration</b>	1 mg/ml
<b>Purity</b>	≥90%
<b>Storage Stability</b>	-20°C/1 year
<b>Synonyms</b>	
<b>Observed Band</b>	47kD
<b>Cell Pathway</b>	Nucleus . Cytoplasm .
<b>Tissue Specificity</b>	Strongly expressed in heart, brain, placenta, lung, skeletal muscle, kidney, spleen, thymus, prostate, liver, pancreas, testis, ovary, small intestine, colon and peripheral blood leukocytes.
<b>Function</b>	catalytic activity:ATP + a protein = ADP + a phosphoprotein.,function:May be a negative regulator of NF-kappa-B and p53-mediated gene transcription.,similarity:Belongs to the protein kinase superfamily. CAMK Ser/Thr protein kinase family.,similarity:Contains 1 protein kinase domain.,tissue specificity:Strongly expressed in heart, brain, placenta, lung, skeletal muscle, kidney, spleen, thymus, prostate, liver, pancreas, testis, ovary, small intestine, colon and peripheral blood leukocytes.,
<b>Background</b>	catalytic activity:ATP + a protein = ADP + a phosphoprotein.,function:May be a negative regulator of NF-kappa-B and p53-mediated gene transcription.,similarity:Belongs to the protein kinase superfamily. CAMK Ser/Thr protein kinase family.,similarity:Contains 1 protein kinase domain.,tissue specificity:Strongly expressed in heart, brain, placenta, lung, skeletal muscle, kidney, spleen, thymus, prostate, liver, pancreas, testis, ovary, small intestine, colon and peripheral blood leukocytes.,

**matters needing attention**

Avoid repeated freezing and thawing!

**Usage suggestions**

This product can be used in immunological reaction related experiments. For more information, please consult technical personnel.

**Products Images**

Western Blot analysis of various cells using STK40 Monoclonal Antibody