

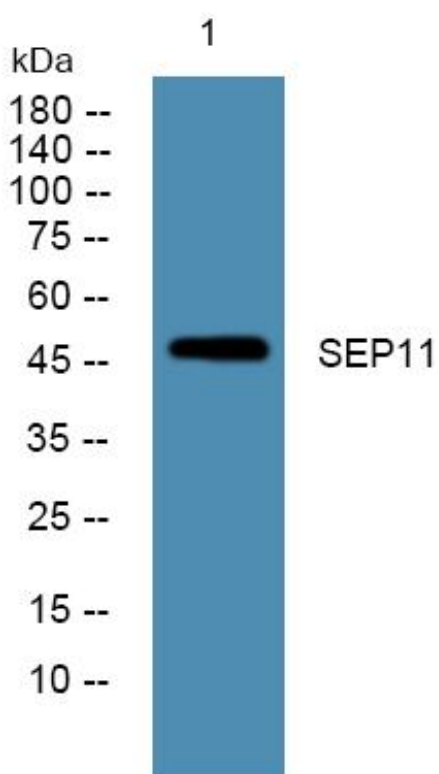


SEP11 Monoclonal Antibody

Catalog No	YP-mAb-06122
Isotype	IgG
Reactivity	Human;Mouse;Rat
Applications	WB
Gene Name	42989
Protein Name	Septin-11
Immunogen	Synthesized peptide derived from human protein . at AA range: 200-280
Specificity	SEP11 Monoclonal Antibody detects endogenous levels of protein.
Formulation	Liquid in PBS containing 50% glycerol, and 0.02% sodium azide.
Source	Monoclonal, Mouse,IgG
Purification	The antibody was affinity-purified from mouse antiserum by affinity-chromatography using epitope-specific immunogen.
Dilution	WB 1:500-1:2000
Concentration	1 mg/ml
Purity	≥90%
Storage Stability	-20°C/1 year
Synonyms	
Observed Band	47kD
Cell Pathway	Cytoplasm, cytoskeleton. Cell junction, synapse. Cell projection, dendritic spine. Cell projection, axon . Partly colocalizes with stress fibers and microtubules. During bacterial infection, displays a collar shape structure next to actin at the pole of invading bacteria.
Tissue Specificity	Widely expressed, except in leukocytes.
Function	disease:A chromosomal aberration involving SEPT11 may be a cause of chronic neutrophilic leukemia. Translocation t(4;11)(q21;q23) with MLL/HRX.,function:Involved in cytokinesis .,similarity:Belongs to the septin family.,subunit:May assemble into a multicomponent structure. Interacts with SEPT12.,
Background	SEPT11 belongs to the conserved septin family of filament-forming cytoskeletal GTPases that are involved in a variety of cellular functions including cytokinesis and vesicle trafficking (Hanai et al., 2004 [PubMed 15196925]; Nagata et al., 2004 [PubMed 15485874]).[supplied by OMIM, Jul 2009],
matters needing attention	Avoid repeated freezing and thawing!

**Usage suggestions**

This product can be used in immunological reaction related experiments. For more information, please consult technical personnel.

Products Images

Western Blot analysis of various cells using SEP11 Monoclonal Antibody