

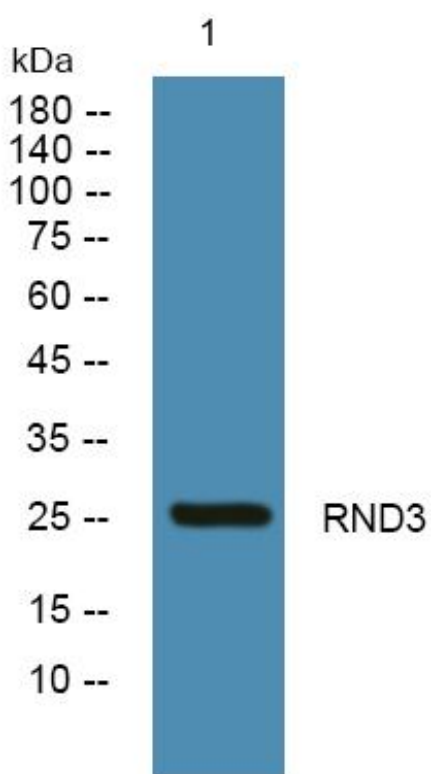


RND3 Monoclonal Antibody

Catalog No	YP-mAb-06098
Isotype	IgG
Reactivity	Human;Rat;Mouse
Applications	WB
Gene Name	RND3 ARHE RHO8 RHOE
Protein Name	Rho-related GTP-binding protein RhoE (Protein MemB) (Rho family GTPase 3) (Rho-related GTP-binding protein Rho8) (Rnd3)
Immunogen	Synthesized peptide derived from human protein . at AA range: 150-230
Specificity	RND3 Monoclonal Antibody detects endogenous levels of protein.
Formulation	Liquid in PBS containing 50% glycerol, and 0.02% sodium azide.
Source	Monoclonal, Mouse,IgG
Purification	The antibody was affinity-purified from mouse antiserum by affinity-chromatography using epitope-specific immunogen.
Dilution	WB 1:500-1:2000
Concentration	1 mg/ml
Purity	≥90%
Storage Stability	-20°C/1 year
Synonyms	
Observed Band	26kD
Cell Pathway	Golgi apparatus membrane; Peripheral membrane protein.
Tissue Specificity	Ubiquitous.
Function	function: Binds GTP but lacks intrinsic GTPase activity and is resistant to Rho-specific GTPase-activating proteins., similarity: Belongs to the small GTPase superfamily. Rho family., subunit: Binds ROCK1 (By similarity). Interacts with UBXD5., tissue specificity: Ubiquitous.,
Background	This gene encodes a protein which is a member of the small GTPase protein superfamily. The encoded protein binds only GTP but has no GTPase activity, and appears to act as a negative regulator of cytoskeletal organization leading to loss of adhesion. Multiple alternatively spliced variants, encoding the same protein, have been identified. [provided by RefSeq, Dec 2011],
matters needing attention	Avoid repeated freezing and thawing!

**Usage suggestions**

This product can be used in immunological reaction related experiments. For more information, please consult technical personnel.

Products Images

Western Blot analysis of various cells using RND3 Monoclonal Antibody