

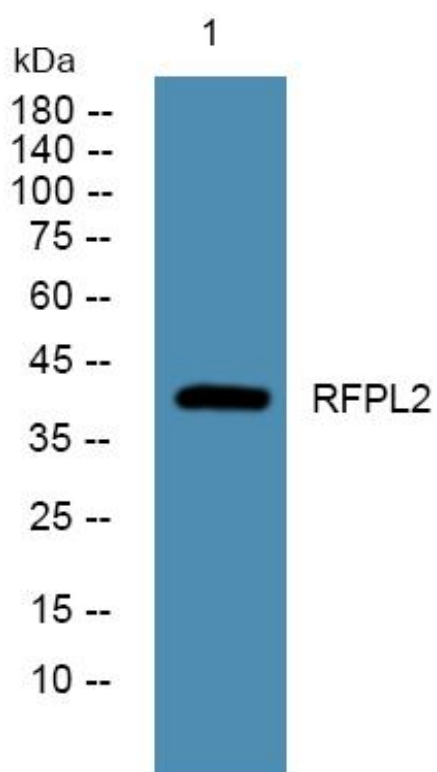


RFPL2 Monoclonal Antibody

| | |
|----------------------------------|--|
| Catalog No | YP-mAb-06079 |
| Isotype | IgG |
| Reactivity | Human;Rat;Mouse; |
| Applications | WB |
| Gene Name | RFPL2 RNF79 |
| Protein Name | Ret finger protein-like 2 (RING finger protein 79) |
| Immunogen | Synthesized peptide derived from human protein . at AA range: 100-180 |
| Specificity | RFPL2 Monoclonal Antibody detects endogenous levels of protein. |
| Formulation | Liquid in PBS containing 50% glycerol, and 0.02% sodium azide. |
| Source | Monoclonal, Mouse,IgG |
| Purification | The antibody was affinity-purified from mouse antiserum by affinity-chromatography using epitope-specific immunogen. |
| Dilution | WB 1:500-1:2000 |
| Concentration | 1 mg/ml |
| Purity | ≥90% |
| Storage Stability | -20°C/1 year |
| Synonyms | |
| Observed Band | 41kD |
| Cell Pathway | |
| Tissue Specificity | Seems to be expressed in prostate and less abundantly in adult brain, fetal liver, and fetal kidney. |
| Function | similarity:Contains 1 B30.2/SPRY domain.,similarity:Contains 1 RING-type zinc finger.,tissue specificity:Seems to be expressed in prostate and less abundantly in adult brain, fetal liver, and fetal kidney., |
| Background | similarity:Contains 1 B30.2/SPRY domain.,similarity:Contains 1 RING-type zinc finger.,tissue specificity:Seems to be expressed in prostate and less abundantly in adult brain, fetal liver, and fetal kidney., |
| matters needing attention | Avoid repeated freezing and thawing! |
| Usage suggestions | This product can be used in immunological reaction related experiments. For more information, please consult technical personnel. |



Products Images



Western Blot analysis of various cells using RFPL2 Monoclonal Antibody