

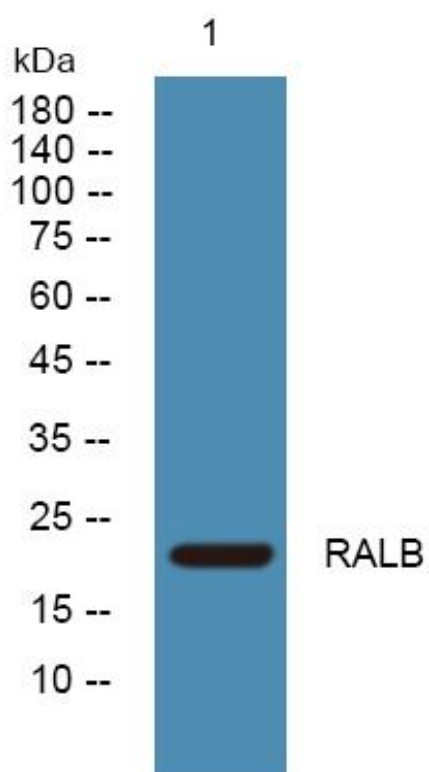


RALB Monoclonal Antibody

Catalog No	YP-mAb-06062
Isotype	IgG
Reactivity	Human;Mouse;Rat
Applications	WB
Gene Name	RALB
Protein Name	Ras-related protein Ral-B
Immunogen	Synthesized peptide derived from human protein . at AA range: 80-160
Specificity	RALB Monoclonal Antibody detects endogenous levels of protein.
Formulation	Liquid in PBS containing 50% glycerol, and 0.02% sodium azide.
Source	Monoclonal, Mouse,IgG
Purification	The antibody was affinity-purified from mouse antiserum by affinity-chromatography using epitope-specific immunogen.
Dilution	WB 1:500-1:2000
Concentration	1 mg/ml
Purity	≥90%
Storage Stability	-20°C/1 year
Synonyms	
Observed Band	22kD
Cell Pathway	Cell membrane ; Lipid-anchor ; Cytoplasmic side . Midbody . During late cytokinesis, enriched at the midbody. .
Tissue Specificity	Brain,Caudate nucleus,Lung,Retina,
Function	similarity:Belongs to the small GTPase superfamily. Ras family.,subunit:Interacts with EXOC8. Interacts with RALBP1 via its effector domain.,
Background	RAS like proto-oncogene B(RALB) Homo sapiens This gene encodes a GTP-binding protein that belongs to the small GTPase superfamily and Ras family of proteins. GTP-binding proteins mediate the transmembrane signaling initiated by the occupancy of certain cell surface receptors. [provided by RefSeq, Jul 2008],
matters needing attention	Avoid repeated freezing and thawing!
Usage suggestions	This product can be used in immunological reaction related experiments. For more information, please consult technical personnel.



Products Images



Western Blot analysis of various cells using RALB Monoclonal Antibody