

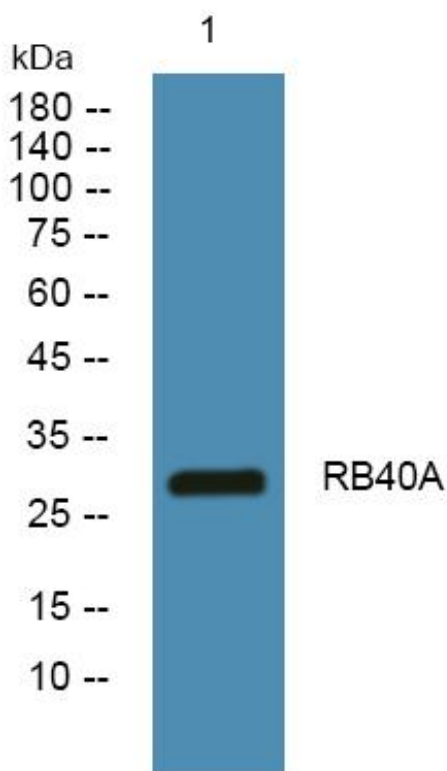


RB40A Monoclonal Antibody

Catalog No	YP-mAb-06052
Isotype	IgG
Reactivity	Human;Rat;Mouse;
Applications	WB
Gene Name	RAB40A
Protein Name	Ras-related protein Rab-40A (SOCS box-containing protein RAR2A) (Protein Rar-2)
Immunogen	Synthesized peptide derived from human protein . at AA range: 160-240
Specificity	RB40A Monoclonal Antibody detects endogenous levels of protein.
Formulation	Liquid in PBS containing 50% glycerol, and 0.02% sodium azide.
Source	Monoclonal, Mouse,IgG
Purification	The antibody was affinity-purified from mouse antiserum by affinity-chromatography using epitope-specific immunogen.
Dilution	WB 1:500-1:2000
Concentration	1 mg/ml
Purity	≥90%
Storage Stability	-20°C/1 year
Synonyms	
Observed Band	30kD
Cell Pathway	Cell membrane ; Lipid-anchor ; Cytoplasmic side .
Tissue Specificity	Brain,Lung,
Function	domain:The SOCS box domain mediates the interaction with the Elongin BC complex, an adapter module in different E3 ubiquitin ligase complexes.,function:May be a substrate-recognition component of a SCF-like ECS (Elongin-Cullin-SOCS-box protein) E3 ubiquitin ligase complex which mediates the ubiquitination and subsequent proteasomal degradation of target proteins.,pathway:Protein modification; protein ubiquitination.,similarity:Belongs to the small GTPase superfamily. Rab family.,similarity:Contains 1 SOCS box domain.,
Background	This gene encodes a member of the Rab40 subfamily of Rab small GTP-binding proteins that contains a C-terminal suppressors of cytokine signaling box. [provided by RefSeq, Apr 2010],
matters needing attention	Avoid repeated freezing and thawing!

**Usage suggestions**

This product can be used in immunological reaction related experiments. For more information, please consult technical personnel.

Products Images

Western Blot analysis of various cells using RB40A Monoclonal Antibody