

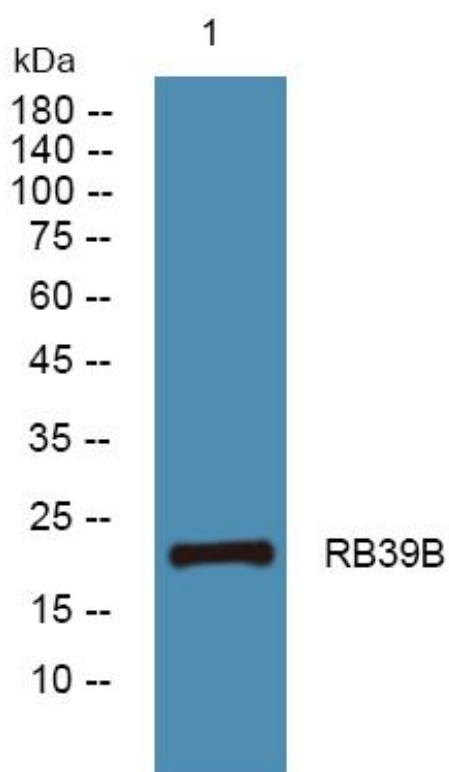


RB39B Monoclonal Antibody

| | |
|----------------------------------|--|
| Catalog No | YP-mAb-06051 |
| Isotype | IgG |
| Reactivity | Human;Mouse |
| Applications | WB |
| Gene Name | RAB39B |
| Protein Name | Ras-related protein Rab-39B |
| Immunogen | Synthesized peptide derived from human protein . at AA range: 80-160 |
| Specificity | RB39B Monoclonal Antibody detects endogenous levels of protein. |
| Formulation | Liquid in PBS containing 50% glycerol, and 0.02% sodium azide. |
| Source | Monoclonal, Mouse,IgG |
| Purification | The antibody was affinity-purified from mouse antiserum by affinity-chromatography using epitope-specific immunogen. |
| Dilution | WB 1:500-1:2000 |
| Concentration | 1 mg/ml |
| Purity | ≥90% |
| Storage Stability | -20°C/1 year |
| Synonyms | |
| Observed Band | 23kD |
| Cell Pathway | Cell membrane ; Lipid-anchor ; Cytoplasmic side . Cytoplasmic vesicle membrane ; Lipid-anchor ; Cytoplasmic side . Golgi apparatus . Partial colocalization with markers that cycle from the cell surface to the trans-Golgi network. . |
| Tissue Specificity | Highly expressed in the brain. |
| Function | function:May be involved in vesicular trafficking.,similarity:Belongs to the small GTPase superfamily. Rab family., |
| Background | This gene encodes a member of the Rab family of proteins. Rab proteins are small GTPases that are involved in vesicular trafficking. Mutations in this gene are associated with X-linked mental retardation. [provided by RefSeq, Aug 2013], |
| matters needing attention | Avoid repeated freezing and thawing! |
| Usage suggestions | This product can be used in immunological reaction related experiments. For more information, please consult technical personnel. |



Products Images



Western Blot analysis of various cells using RB39B
Monoclonal Antibody