



# RB33B Monoclonal Antibody

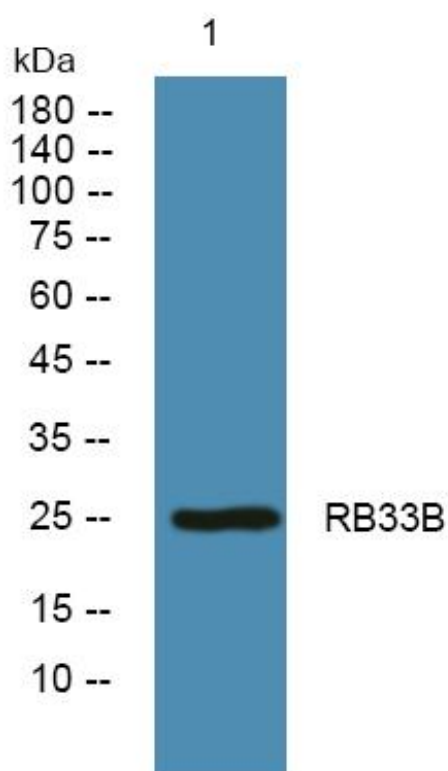
<b>Catalog No</b>	YP-mAb-06048
<b>Isotype</b>	IgG
<b>Reactivity</b>	Human;Mouse
<b>Applications</b>	WB
<b>Gene Name</b>	RAB33B
<b>Protein Name</b>	Ras-related protein Rab-33B
<b>Immunogen</b>	Synthesized peptide derived from human protein . at AA range: 100-180
<b>Specificity</b>	RB33B Monoclonal Antibody detects endogenous levels of protein.
<b>Formulation</b>	Liquid in PBS containing 50% glycerol, and 0.02% sodium azide.
<b>Source</b>	Monoclonal, Mouse,IgG
<b>Purification</b>	The antibody was affinity-purified from mouse antiserum by affinity-chromatography using epitope-specific immunogen.
<b>Dilution</b>	WB 1:500-1:2000
<b>Concentration</b>	1 mg/ml
<b>Purity</b>	≥90%
<b>Storage Stability</b>	-20°C/1 year
<b>Synonyms</b>	
<b>Observed Band</b>	25kD
<b>Cell Pathway</b>	Golgi apparatus membrane ; Lipid-anchor . Golgi apparatus, cis-Golgi network . Under starvation conditions punctate RAB33B-positive structures are often observed in the cytoplasm. .
<b>Tissue Specificity</b>	Brain,Testis,Tongue,
<b>Function</b>	function:Protein transport. Probably involved in vesicular traffic.,similarity:Belongs to the small GTPase superfamily. Rab family.,
<b>Background</b>	This gene encodes a small GTP-binding protein of the Rab GTPase family, whose members function in vesicle transport during protein secretion and endocytosis. Rab GTPases are active, membrane-associated proteins that recruit effector proteins in the GTP-bound state and inactive cytosolic proteins when in a GDP-bound state. The protein encoded by this gene is ubiquitously expressed and has been implicated in Golgi to endoplasmic reticulum cycling of Golgi enzymes. In addition, this protein regulates Golgi homeostasis and coordinates intra-Golgi retrograde trafficking. Allelic variants in this gene have been associated with Dyggve-Melchior-Clausen syndrome and Smith-McCort dysplasia 2, which are autosomal recessive spondyloepimetaphyseal dysplasias characterized by skeletal abnormalities. [provided by RefSeq, Sep 2016],

**matters needing attention**

Avoid repeated freezing and thawing!

**Usage suggestions**

This product can be used in immunological reaction related experiments. For more information, please consult technical personnel.

**Products Images**

Western Blot analysis of various cells using RB33B Monoclonal Antibody