



RAB32 Monoclonal Antibody

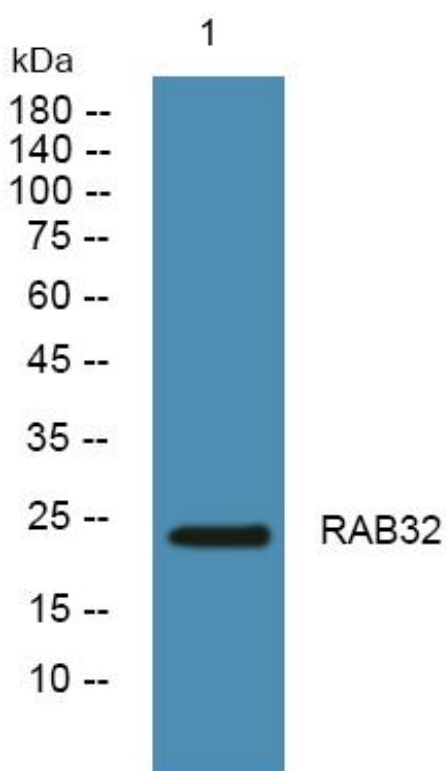
Catalog No	YP-mAb-06047
Isotype	IgG
Reactivity	Human;Mouse
Applications	WB
Gene Name	RAB32
Protein Name	Ras-related protein Rab-32
Immunogen	Synthesized peptide derived from human protein . at AA range: 160-240
Specificity	RAB32 Monoclonal Antibody detects endogenous levels of protein.
Formulation	Liquid in PBS containing 50% glycerol, and 0.02% sodium azide.
Source	Monoclonal, Mouse,IgG
Purification	The antibody was affinity-purified from mouse antiserum by affinity-chromatography using epitope-specific immunogen.
Dilution	WB 1:500-1:2000
Concentration	1 mg/ml
Purity	≥90%
Storage Stability	-20°C/1 year
Synonyms	
Observed Band	24kD
Cell Pathway	Mitochondrion . Mitochondrion outer membrane ; Lipid-anchor . Cytoplasmic vesicle, phagosome . Cytoplasmic vesicle, phagosome membrane ; Lipid-anchor ; Cytoplasmic side . Melanosome . Melanosome membrane . Recruited to phagosomes containing S.aureus or M.tuberculosis (PubMed:21255211). The BLOC-3 complex, a heterodimer of HPS1 and HPS4 promotes its membrane localization (PubMed:23084991). .
Tissue Specificity	Widely expressed with high levels in heart, liver, kidney, bone marrow, testis, colon and fetal lung.
Function	function:Acts as an A-kinase anchoring protein by binding to the type II regulatory subunit of protein kinase A and anchoring it to the mitochondrion. Also involved in synchronization of mitochondrial fission.,similarity:Belongs to the small GTPase superfamily. Rab family.,tissue specificity:Widely expressed with high levels in heart, liver, kidney, bone marrow, testis, colon and fetal lung.,
Background	The protein encoded by this gene anchors the type II regulatory subunit of protein kinase A to the mitochondrion and aids in mitochondrial fission. The encoded protein also appears to be involved in autophagy and melanosome secretion. Variations in this gene may be linked to leprosy. [provided by RefSeq, Dec 2015],

**matters needing attention**

Avoid repeated freezing and thawing!

Usage suggestions

This product can be used in immunological reaction related experiments. For more information, please consult technical personnel.

Products Images

Western Blot analysis of various cells using RAB32 Monoclonal Antibody