

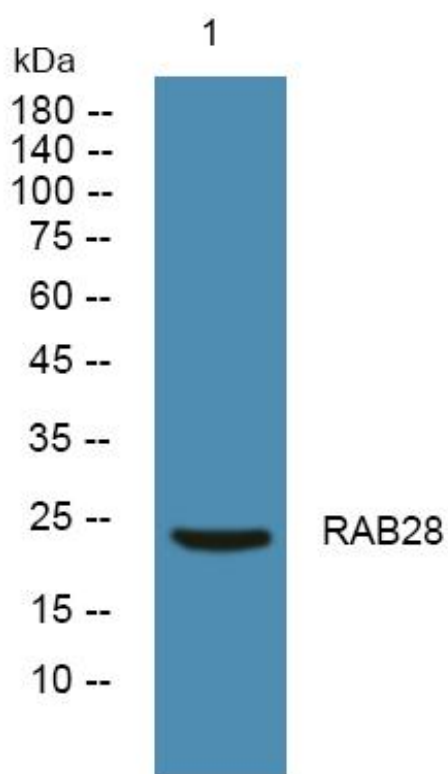


RAB28 Monoclonal Antibody

Catalog No	YP-mAb-06045
Isotype	IgG
Reactivity	Human;Rat;Mouse
Applications	WB
Gene Name	RAB28
Protein Name	Ras-related protein Rab-28
Immunogen	Synthesized peptide derived from human protein . at AA range: 80-160
Specificity	RAB28 Monoclonal Antibody detects endogenous levels of protein.
Formulation	Liquid in PBS containing 50% glycerol, and 0.02% sodium azide.
Source	Monoclonal, Mouse,IgG
Purification	The antibody was affinity-purified from mouse antiserum by affinity-chromatography using epitope-specific immunogen.
Dilution	WB 1:500-1:2000
Concentration	1 mg/ml
Purity	≥90%
Storage Stability	-20°C/1 year
Synonyms	
Observed Band	24kD
Cell Pathway	Cell membrane ; Lipid-anchor ; Cytoplasmic side . Cytoplasm, cytoskeleton, cilium basal body. Expressed in the basal body and ciliary rootlet of the photoreceptors. .
Tissue Specificity	Isoform S is detected in most tissues investigated: cortex, liver, kidney, skeletal muscle, adipose tissue, testis, urothelium, lung, bone marrow and retinal pigment epithelium (RPE). Isoform L 2 is widely and abundantly expressed all tissues. Isoform 3 is highly expressed in heart, lung, bone marrow, retina, brain, and RPE.
Function	similarity:Belongs to the small GTPase superfamily. Rab family.,tissue specificity:Isoform S is detected in most tissues investigated (cortex, liver, kidney, skeletal muscle, adipose tissue, testis and urothelium), whereas isoform L is predominant in testis.,
Background	This gene encodes a member of the Rab subfamily of Ras-related small GTPases. The encoded protein may be involved in regulating intracellular trafficking. Alternative splicing results in multiple transcript variants. Pseudogenes of this gene are found on chromosomes 9 and X. [provided by RefSeq, Apr 2009],
matters needing attention	Avoid repeated freezing and thawing!

**Usage suggestions**

This product can be used in immunological reaction related experiments. For more information, please consult technical personnel.

Products Images

Western Blot analysis of various cells using RAB28 Monoclonal Antibody