

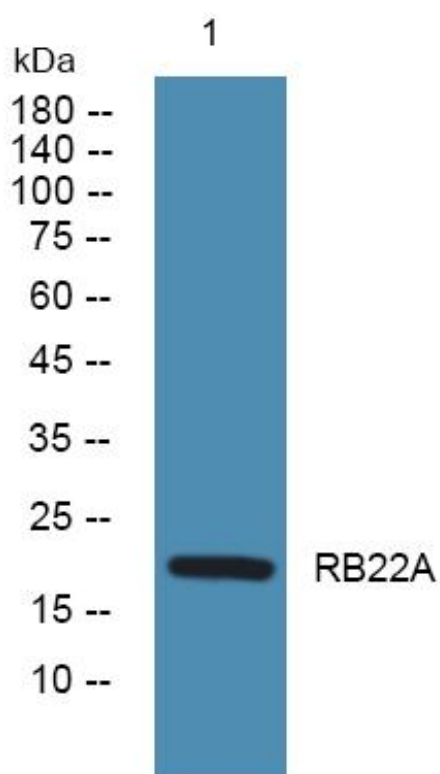


RB22A Monoclonal Antibody

Catalog No	YP-mAb-06042
Isotype	IgG
Reactivity	Human;Mouse
Applications	WB
Gene Name	RAB22A RAB22
Protein Name	Ras-related protein Rab-22A (Rab-22)
Immunogen	Synthesized peptide derived from human protein . at AA range: 80-160
Specificity	RB22A Monoclonal Antibody detects endogenous levels of protein.
Formulation	Liquid in PBS containing 50% glycerol, and 0.02% sodium azide.
Source	Monoclonal, Mouse,IgG
Purification	The antibody was affinity-purified from mouse antiserum by affinity-chromatography using epitope-specific immunogen.
Dilution	WB 1:500-1:2000
Concentration	1 mg/ml
Purity	≥90%
Storage Stability	-20°C/1 year
Synonyms	
Observed Band	21kD
Cell Pathway	Endosome membrane ; Lipid-anchor . Cell membrane ; Lipid-anchor . Early endosome . Late endosome . Cell projection, ruffle . Cytoplasmic vesicle . Cytoplasmic vesicle, phagosome . Cytoplasmic vesicle, phagosome membrane ; Lipid-anchor ; Cytoplasmic side . Recruited to phagosomes containing S.aureus or M.tuberculosis. .
Tissue Specificity	Bladder,Colon,Colon carcinoma,Uterus,
Function	similarity:Belongs to the small GTPase superfamily. Rab family.,subunit:Interacts directly with ZFYVE20 (By similarity). Binds EEA1.,
Background	The protein encoded by this gene is a member of the RAB family of small GTPases. The GTP-bound form of the encoded protein has been shown to interact with early-endosomal antigen 1, and may be involved in the trafficking of and interaction between endosomal compartments. [provided by RefSeq, Jul 2008],
matters needing attention	Avoid repeated freezing and thawing!

**Usage suggestions**

This product can be used in immunological reaction related experiments. For more information, please consult technical personnel.

Products Images

Western Blot analysis of various cells using RB22A Monoclonal Antibody