

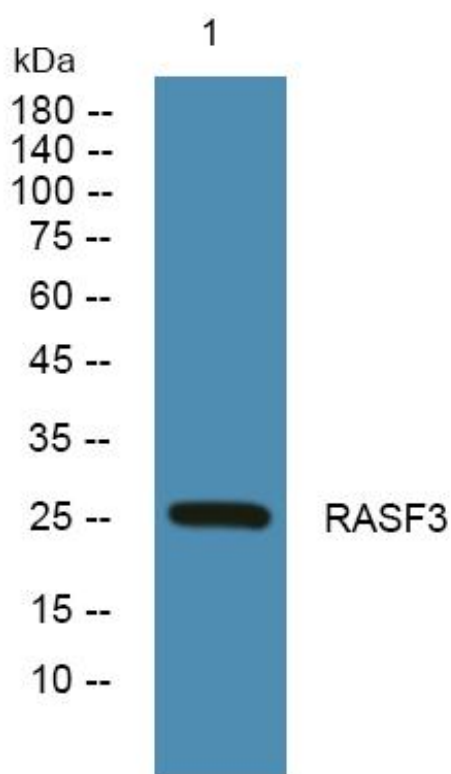


RASF3 Monoclonal Antibody

Catalog No	YP-mAb-06023
Isotype	IgG
Reactivity	Human;Mouse
Applications	WB
Gene Name	RASSF3
Protein Name	Ras association domain-containing protein 3
Immunogen	Synthesized peptide derived from human protein . at AA range: 160-240
Specificity	RASF3 Monoclonal Antibody detects endogenous levels of protein.
Formulation	Liquid in PBS containing 50% glycerol, and 0.02% sodium azide.
Source	Monoclonal, Mouse,IgG
Purification	The antibody was affinity-purified from mouse antiserum by affinity-chromatography using epitope-specific immunogen.
Dilution	WB 1:500-1:2000
Concentration	1 mg/ml
Purity	≥90%
Storage Stability	-20°C/1 year
Synonyms	
Observed Band	26kD
Cell Pathway	Cytoplasm . Cytoplasm, cytoskeleton . Localized to microtubules in vascular endothelial cells.
Tissue Specificity	Widely expressed.
Function	caution:Has been termed RASSF5 by Ref.1.,similarity:Contains 1 Ras-associating domain.,similarity:Contains 1 SARAH domain.,subcellular location:Localized to microtubules in vascular endothelial cells.,tissue specificity:Widely expressed.,
Background	The RAS oncogene (MIM 190020) is mutated in nearly one-third of all human cancers. Members of the RAS superfamily are plasma membrane GTP-binding proteins that modulate intracellular signal transduction pathways. A subfamily of RAS effectors, including RASSF3, share a RAS association (RA) domain.[supplied by OMIM, Jul 2003],
matters needing attention	Avoid repeated freezing and thawing!

**Usage suggestions**

This product can be used in immunological reaction related experiments. For more information, please consult technical personnel.

Products Images

Western Blot analysis of various cells using RASF3 Monoclonal Antibody