

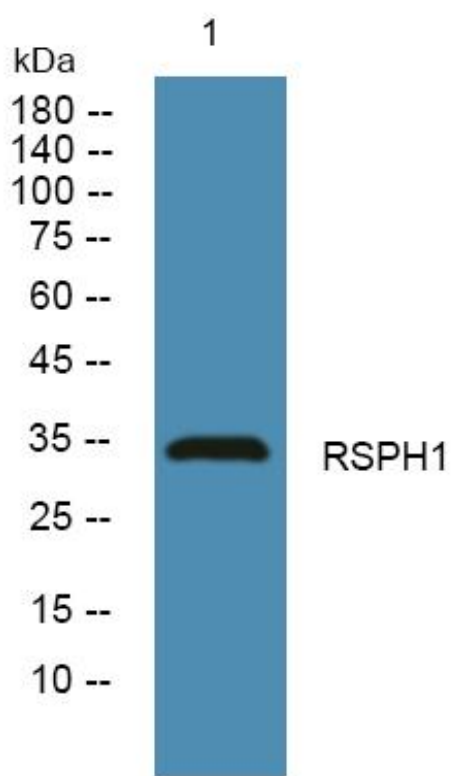


# RSPH1 Monoclonal Antibody

<b>Catalog No</b>	YP-mAb-06010
<b>Isotype</b>	IgG
<b>Reactivity</b>	Human;Mouse
<b>Applications</b>	WB
<b>Gene Name</b>	RSPH1 TSA2 TSGA2
<b>Protein Name</b>	Radial spoke head 1 homolog (Cancer/testis antigen 79) (CT79) (Male meiotic metaphase chromosome-associated acidic protein) (Meichroacidin) (Testis-specific gene A2 protein)
<b>Immunogen</b>	Synthesized peptide derived from human protein . at AA range: 50-130
<b>Specificity</b>	RSPH1 Monoclonal Antibody detects endogenous levels of protein.
<b>Formulation</b>	Liquid in PBS containing 50% glycerol, and 0.02% sodium azide.
<b>Source</b>	Monoclonal, Mouse,IgG
<b>Purification</b>	The antibody was affinity-purified from mouse antiserum by affinity-chromatography using epitope-specific immunogen.
<b>Dilution</b>	WB 1:500-1:2000
<b>Concentration</b>	1 mg/ml
<b>Purity</b>	≥90%
<b>Storage Stability</b>	-20°C/1 year
<b>Synonyms</b>	
<b>Observed Band</b>	33kD
<b>Cell Pathway</b>	Cytoplasm . Cell projection, cilium . Cytoplasmic in late spermatocytes, secondary spermatocytes and round spermatids. Gathered around metaphase chromosomes during meiotic divisions (By similarity). .
<b>Tissue Specificity</b>	Expressed in trachea, lungs, airway brushings, and testes.
<b>Function</b>	function:May play an important role in male meiosis.,similarity:Contains 6 MORN repeats.,subcellular location:Cytoplasmic in late spermatocytes, secondary spermatocytes and round spermatids. Gathered around metaphase chromosomes during meiotic divisions.,tissue specificity:Testis specific.,
<b>Background</b>	This gene encodes a male meiotic metaphase chromosome-associated acidic protein. This gene is expressed in tissues with motile cilia or flagella, including the trachea, lungs, airway brushings, and testes. Mutations in this gene result in primary ciliary dyskinesia-24. Alternatively spliced transcript variants encoding different isoforms have been found for this gene. [provided by RefSeq, Sep 2014],
<b>matters needing attention</b>	Avoid repeated freezing and thawing!

**Usage suggestions**

This product can be used in immunological reaction related experiments. For more information, please consult technical personnel.

**Products Images**

Western Blot analysis of various cells using RSPH1 Monoclonal Antibody