



# PPM1E Monoclonal Antibody

<b>Catalog No</b>	YP-mAb-05983
<b>Isotype</b>	IgG
<b>Reactivity</b>	Human;Mouse;Rat
<b>Applications</b>	WB
<b>Gene Name</b>	PPM1E CAMKN KIAA1072 POPX1
<b>Protein Name</b>	Protein phosphatase 1E (EC 3.1.3.16) (Ca(2+)/calmodulin-dependent protein kinase phosphatase N) (CaMKP-N) (CaMKP-nucleus) (CaMKN) (Partner of PIX 1) (Partner of PIX-alpha) (Partner of PIXA)
<b>Immunogen</b>	Synthesized peptide derived from human protein . at AA range: 460-540
<b>Specificity</b>	PPM1E Monoclonal Antibody detects endogenous levels of protein.
<b>Formulation</b>	Liquid in PBS containing 50% glycerol, and 0.02% sodium azide.
<b>Source</b>	Monoclonal, Mouse,IgG
<b>Purification</b>	The antibody was affinity-purified from mouse antiserum by affinity-chromatography using epitope-specific immunogen.
<b>Dilution</b>	WB 1:500-1:2000
<b>Concentration</b>	1 mg/ml
<b>Purity</b>	≥90%
<b>Storage Stability</b>	-20°C/1 year
<b>Synonyms</b>	
<b>Observed Band</b>	84kD
<b>Cell Pathway</b>	Nucleus . Cytoplasm . A truncated form, major form, with the C-terminal part missing, is mostly found in the cytoplasm and a little in the nucleus. The full-length, minor form, is found in the nucleus. .
<b>Tissue Specificity</b>	Brain,Testis,
<b>Function</b>	catalytic activity:A phosphoprotein + H(2)O = a protein + phosphate.,cofactor:Binds 2 magnesium or manganese ions per subunit.,function:Protein phosphatase that inactivates multifunctional CaM kinases such as CAMK4 and CAMK2 (By similarity). Dephosphorylates and inactivates PAK. May play a role in the inhibition of actin fiber stress breakdown and in morphological changes driven by TNK2/CDC42.,similarity:Belongs to the PP2C family.,similarity:Contains 1 PP2C-like domain.,subcellular location:A truncated form, major form, with the C-terminal part missing, is mostly found in the cytoplasm and a little in the nucleus. The full length, minor form, is found in the nucleus.,subunit:Heterotrimer. Interacts with PAX1 and ARHGEF6 (or ARHGEF7).,
<b>Background</b>	This gene encodes a member of the PPM family of serine/threonine-protein phosphatases. The encoded protein is localized to the nucleus and



dephosphorylates and inactivates multiple substrates including serine/threonine-protein kinase PAK 1, 5'-AMP-activated protein kinase (AMPK) and the multifunctional calcium/calmodulin-dependent protein kinases. Alternatively spliced transcript variants have been observed for this gene. [provided by RefSeq, May 2012],

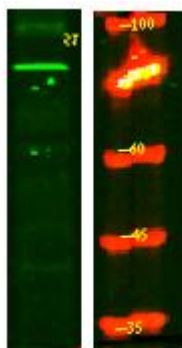
**matters needing attention**

Avoid repeated freezing and thawing!

**Usage suggestions**

This product can be used in immunological reaction related experiments. For more information, please consult technical personnel.

## Products Images



Western Blot analysis of various cells using PPM1E Monoclonal Antibody