

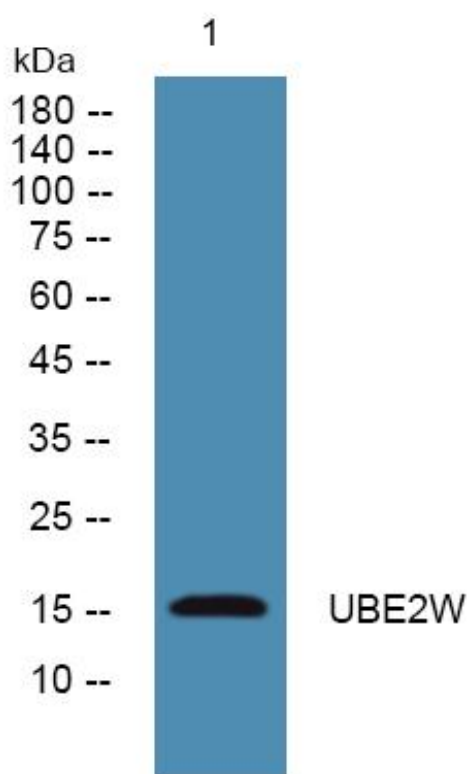


UBE2W Monoclonal Antibody

Catalog No	YP-mAb-05977
Isotype	IgG
Reactivity	Human;Rat;Mouse
Applications	WB
Gene Name	UBE2W UBC16
Protein Name	Ubiquitin-conjugating enzyme E2 W (EC 6.3.2.19) (Ubiquitin carrier protein W) (Ubiquitin-conjugating enzyme 16) (UBC-16) (Ubiquitin-protein ligase W)
Immunogen	Synthesized peptide derived from human protein . at AA range: 90-170
Specificity	UBE2W Monoclonal Antibody detects endogenous levels of protein.
Formulation	Liquid in PBS containing 50% glycerol, and 0.02% sodium azide.
Source	Monoclonal, Mouse,IgG
Purification	The antibody was affinity-purified from mouse antiserum by affinity-chromatography using epitope-specific immunogen.
Dilution	WB 1:500-1:2000
Concentration	1 mg/ml
Purity	≥90%
Storage Stability	-20°C/1 year
Synonyms	
Observed Band	16kD
Cell Pathway	Nucleus . In the nucleus, colocalizes with FANCL. .
Tissue Specificity	Widely expressed, with highest expression in brain, liver, pancreas and heart.
Function	catalytic activity:ATP + ubiquitin + protein lysine = AMP + diphosphate + protein N-ubiquityllysine.,function:Catalyzes the covalent attachment of ubiquitin to other proteins.,pathway:Protein modification; protein ubiquitination.,similarity:Belongs to the ubiquitin-conjugating enzyme family.,subunit:Homodimer.,
Background	This gene encodes a nuclear-localized ubiquitin-conjugating enzyme (E2) that, along with ubiquitin-activating (E1) and ligating (E3) enzymes, coordinates the addition of a ubiquitin moiety to existing proteins. The encoded protein promotes the ubiquitination of Fanconi anemia complementation group proteins and may be important in the repair of DNA damage. There is a pseudogene for this gene on chromosome 1. Alternative splicing results in multiple transcript variants. [provided by RefSeq, Aug 2012],
matters needing attention	Avoid repeated freezing and thawing!

**Usage suggestions**

This product can be used in immunological reaction related experiments. For more information, please consult technical personnel.

Products Images

Western Blot analysis of various cells using UBE2W Monoclonal Antibody