



# KCNKG Monoclonal Antibody

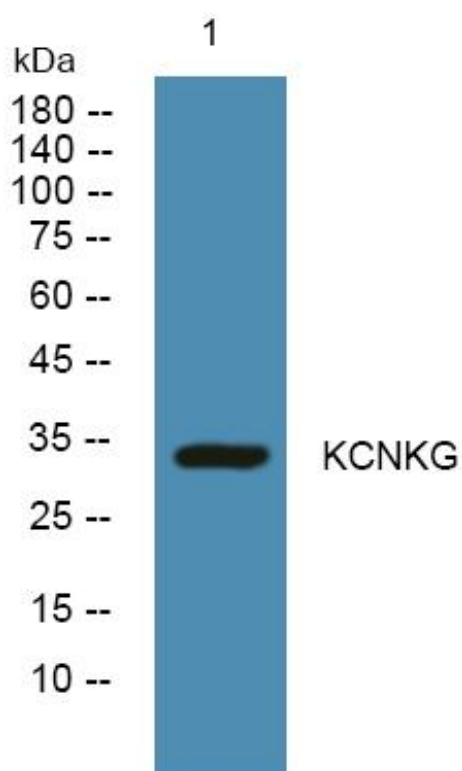
Catalog No	YP-mAb-05947
Isotype	IgG
Reactivity	Human;Rat;Mouse;
Applications	WB
Gene Name	KCNK16 TALK1
Protein Name	Potassium channel subfamily K member 16 (2P domain potassium channel Talk-1) (TWIK-related alkaline pH-activated K(+) channel 1) (TALK-1)
Immunogen	Synthesized peptide derived from human protein . at AA range: 230-310
Specificity	KCNKG Monoclonal Antibody detects endogenous levels of protein.
Formulation	Liquid in PBS containing 50% glycerol, and 0.02% sodium azide.
Source	Monoclonal, Mouse,IgG
Purification	The antibody was affinity-purified from mouse antiserum by affinity-chromatography using epitope-specific immunogen.
Dilution	WB 1:500-1:2000
Concentration	1 mg/ml
Purity	≥90%
Storage Stability	-20°C/1 year
Synonyms	
Observed Band	33kD
Cell Pathway	Membrane; Multi-pass membrane protein.
Tissue Specificity	Highly expressed in pancreas. Not detectable in the other tissues tested.
Function	function:Outward rectifying potassium channel. Produces rapidly activating and non-inactivating outward rectifier K(+) currents.,miscellaneous:Inhibited by Ba(2+), quinine, quinidine, chloroform and halothane. Activated at alkaline pH.,similarity:Belongs to the two pore domain potassium channel (TC 1.A.1.8) family.,subunit:Homodimer .,tissue specificity:Highly expressed in pancreas. Not detectable in the other tissues tested.,
Background	potassium two pore domain channel subfamily K member 16(KCNK16) Homo sapiens The protein encoded by this gene belongs to the family of potassium channel proteins containing two pore-forming P domains. This channel is an open rectifier which primarily passes outward current under physiological K <sup>+</sup> concentrations. This gene is expressed predominantly in the pancreas and is activated at alkaline pH. Several alternatively spliced transcript variants encoding different isoforms have been identified for this gene. [provided by RefSeq, Sep 2008],

**matters needing attention**

Avoid repeated freezing and thawing!

**Usage suggestions**

This product can be used in immunological reaction related experiments. For more information, please consult technical personnel.

**Products Images**

Western Blot analysis of various cells using KCNKG Monoclonal Antibody