



# PLS4 Monoclonal Antibody

<b>Catalog No</b>	YP-mAb-05932
<b>Isotype</b>	IgG
<b>Reactivity</b>	Human;Rat;Mouse;
<b>Applications</b>	WB
<b>Gene Name</b>	PLSCR4 GIG43
<b>Protein Name</b>	Phospholipid scramblase 4 (PL scramblase 4) (Ca(2+)-dependent phospholipid scramblase 4) (Cell growth-inhibiting gene 43 protein) (TRA1)
<b>Immunogen</b>	Synthesized peptide derived from human protein . at AA range: 190-270
<b>Specificity</b>	PLS4 Monoclonal Antibody detects endogenous levels of protein.
<b>Formulation</b>	Liquid in PBS containing 50% glycerol, and 0.02% sodium azide.
<b>Source</b>	Monoclonal, Mouse,IgG
<b>Purification</b>	The antibody was affinity-purified from mouse antiserum by affinity-chromatography using epitope-specific immunogen.
<b>Dilution</b>	WB 1:500-1:2000
<b>Concentration</b>	1 mg/ml
<b>Purity</b>	≥90%
<b>Storage Stability</b>	-20°C/1 year
<b>Synonyms</b>	
<b>Observed Band</b>	36kD
<b>Cell Pathway</b>	Membrane ; Single-pass type II membrane protein .
<b>Tissue Specificity</b>	Expressed in heart, brain, placenta, lung, liver, kidney, pancreas, spleen, thymus, prostate, testis, uterus, small intestine and colon. Not detected in peripheral blood lymphocytes.
<b>Function</b>	cofactor:Calcium.,function:May mediate accelerated ATP-independent bidirectional transbilayer migration of phospholipids upon binding calcium ions that results in a loss of phospholipid asymmetry in the plasma membrane. May play a central role in the initiation of fibrin clot formation, in the activation of mast cells and in the recognition of apoptotic and injured cells by the reticuloendothelial system.,similarity:Belongs to the phospholipid scramblase family.,tissue specificity:Expressed in heart, brain, placenta, lung, liver, kidney, pancreas, spleen, thymus, prostate, testis, uterus, small intestine and colon. Not detected in peripheral blood lymphocytes.,
<b>Background</b>	cofactor:Calcium.,function:May mediate accelerated ATP-independent bidirectional transbilayer migration of phospholipids upon binding calcium ions that results in a loss of phospholipid asymmetry in the plasma membrane. May play a central role in the initiation of fibrin clot formation, in the activation of mast cells and in the recognition of apoptotic and injured cells by the reticuloendothelial



system.,similarity:Belongs to the phospholipid scramblase family.,tissue specificity:Expressed in heart, brain, placenta, lung, liver, kidney, pancreas, spleen, thymus, prostate, testis, uterus, small intestine and colon. Not detected in peripheral blood lymphocytes.,

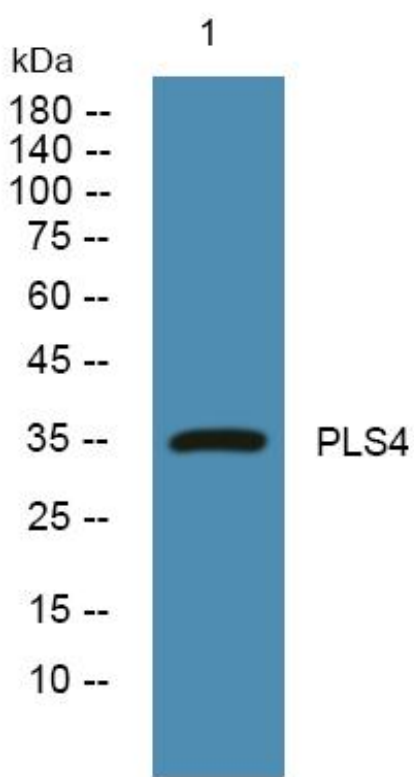
**matters needing attention**

Avoid repeated freezing and thawing!

**Usage suggestions**

This product can be used in immunological reaction related experiments. For more information, please consult technical personnel.

## Products Images



Western Blot analysis of various cells using PLS4 Monoclonal Antibody