

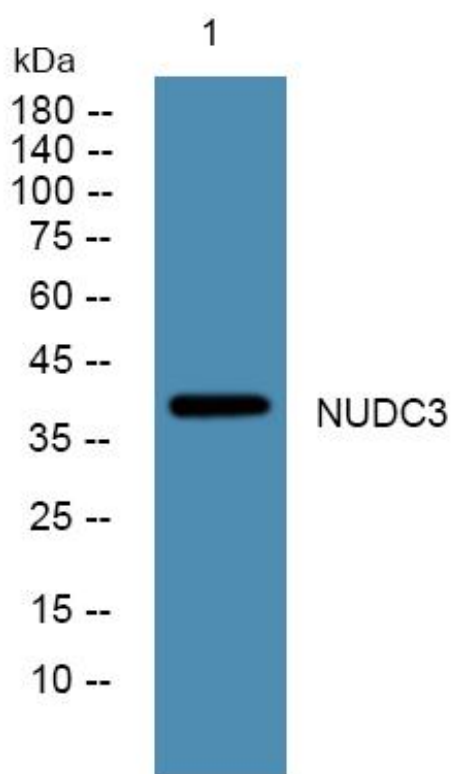


# NUDC3 Monoclonal Antibody

|                                  |  |
|----------------------------------|--|
| <b>Catalog No</b>                | YP-mAb-05886   |
| <b>Isotype</b>                   | IgG  |
| <b>Reactivity</b>                | Human;Mouse  |
| <b>Applications</b>              | WB   |
| <b>Gene Name</b>                 | NUDCD3 KIAA1068  |
| <b>Protein Name</b>              | NudC domain-containing protein 3   |
| <b>Immunogen</b>                 | Synthesized peptide derived from human protein . at AA range: 30-110   |
| <b>Specificity</b>               | NUDC3 Monoclonal Antibody detects endogenous levels of protein.  |
| <b>Formulation</b>               | Liquid in PBS containing 50% glycerol, and 0.02% sodium azide.   |
| <b>Source</b>                    | Monoclonal, Mouse,IgG  |
| <b>Purification</b>              | The antibody was affinity-purified from mouse antiserum by affinity-chromatography using epitope-specific immunogen.   |
| <b>Dilution</b>                  | WB 1:500-1:2000  |
| <b>Concentration</b>             | 1 mg/ml  |
| <b>Purity</b>                    | ≥90%   |
| <b>Storage Stability</b>         | -20°C/1 year   |
| <b>Synonyms</b>                  |  |
| <b>Observed Band</b>             | 39kD   |
| <b>Cell Pathway</b>              | cytoplasm,   |
| <b>Tissue Specificity</b>        | Brain,Epithelium,Pancreas,Placenta,  |
| <b>Function</b>                  | PTM:Phosphorylated upon DNA damage, probably by ATM or ATR.,similarity:Contains 1 CS domain.,  |
| <b>Background</b>                | The product of this gene functions to maintain the stability of dynein intermediate chain. Depletion of this gene product results in aggregation and degradation of dynein intermediate chain, mislocalization of the dynein complex from kinetochores, spindle microtubules, and spindle poles, and loss of gamma-tubulin from spindle poles. The protein localizes to the Golgi apparatus during interphase, and levels of the protein increase after the G1/S transition. [provided by RefSeq, Jul 2008], |
| <b>matters needing attention</b> | Avoid repeated freezing and thawing!   |

**Usage suggestions**

This product can be used in immunological reaction related experiments. For more information, please consult technical personnel.

**Products Images**

Western Blot analysis of various cells using NUDC3 Monoclonal Antibody