

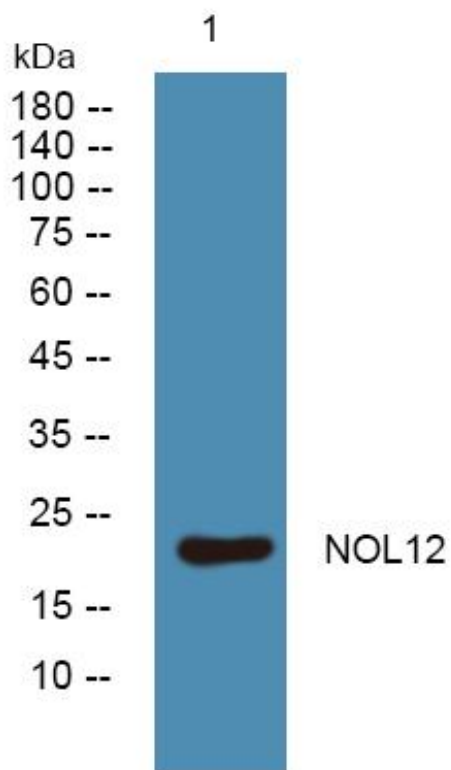


NOL12 Monoclonal Antibody

Catalog No	YP-mAb-05881
Isotype	IgG
Reactivity	Human;Rat;Mouse
Applications	WB
Gene Name	NOL12
Protein Name	Nucleolar protein 12
Immunogen	Synthesized peptide derived from human protein . at AA range: 140-220
Specificity	NOL12 Monoclonal Antibody detects endogenous levels of protein.
Formulation	Liquid in PBS containing 50% glycerol, and 0.02% sodium azide.
Source	Monoclonal, Mouse,IgG
Purification	The antibody was affinity-purified from mouse antiserum by affinity-chromatography using epitope-specific immunogen.
Dilution	WB 1:500-1:2000
Concentration	1 mg/ml
Purity	≥90%
Storage Stability	-20°C/1 year
Synonyms	
Observed Band	23kD
Cell Pathway	Nucleus, nucleolus .
Tissue Specificity	Epithelium,Lymph,
Function	function:May bind to 28S rRNA.,similarity:Belongs to the RRP17 family.,
Background	function:May bind to 28S rRNA.,similarity:Belongs to the RRP17 family.,
matters needing attention	Avoid repeated freezing and thawing!
Usage suggestions	This product can be used in immunological reaction related experiments. For more information, please consult technical personnel.



Products Images



Western Blot analysis of various cells using NOL12 Monoclonal Antibody