



# NPTX2 Monoclonal Antibody

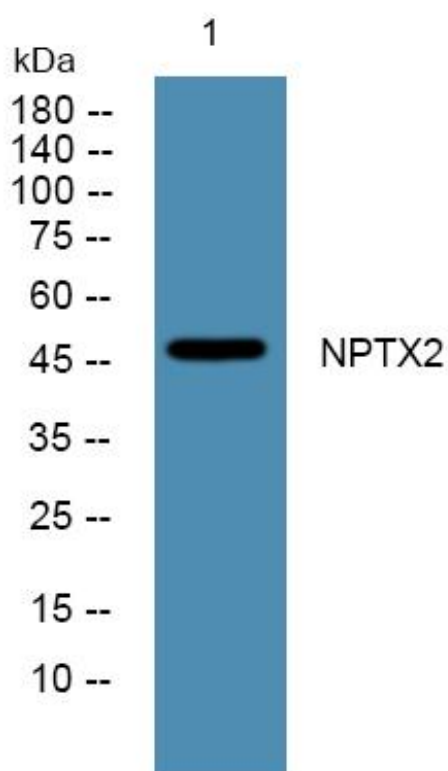
<b>Catalog No</b>	YP-mAb-05850
<b>Isotype</b>	IgG
<b>Reactivity</b>	Human;Rat;Mouse
<b>Applications</b>	WB
<b>Gene Name</b>	NPTX2
<b>Protein Name</b>	Neuronal pentraxin-2 (NP2) (Neuronal pentraxin II) (NP-II)
<b>Immunogen</b>	Synthesized peptide derived from human protein . at AA range: 130-210
<b>Specificity</b>	NPTX2 Monoclonal Antibody detects endogenous levels of protein.
<b>Formulation</b>	Liquid in PBS containing 50% glycerol, and 0.02% sodium azide.
<b>Source</b>	Monoclonal, Mouse,IgG
<b>Purification</b>	The antibody was affinity-purified from mouse antiserum by affinity-chromatography using epitope-specific immunogen.
<b>Dilution</b>	WB 1:500-1:2000
<b>Concentration</b>	1 mg/ml
<b>Purity</b>	≥90%
<b>Storage Stability</b>	-20°C/1 year
<b>Synonyms</b>	
<b>Observed Band</b>	47kD
<b>Cell Pathway</b>	Secreted .
<b>Tissue Specificity</b>	Brain, pancreas, liver, heart and skeletal muscle. Highest levels are seen in the testis.
<b>Function</b>	cofactor: Binds 2 calcium ions per subunit.,function: Likely to play role in the modification of cellular properties that underlie long-term plasticity. Binds to agar matrix in a calcium-dependent manner.,similarity: Contains 1 pentaxin domain.,tissue specificity: Brain, pancreas, liver, heart and skeletal muscle. Highest levels are seen in the testis.,
<b>Background</b>	This gene encodes a member of the family of neuronal petraxins, synaptic proteins that are related to C-reactive protein. This protein is involved in excitatory synapse formation. It also plays a role in clustering of alpha-amino-3-hydroxy-5-methyl-4-isoxazolepropionic acid (AMPA)-type glutamate receptors at established synapses, resulting in non-apoptotic cell death of dopaminergic nerve cells. Up-regulation of this gene in Parkinson disease (PD) tissues suggests that the protein may be involved in the pathology of PD. [provided by RefSeq, Feb 2009],

**matters needing attention**

Avoid repeated freezing and thawing!

**Usage suggestions**

This product can be used in immunological reaction related experiments. For more information, please consult technical personnel.

**Products Images**

Western Blot analysis of various cells using NPTX2 Monoclonal Antibody