

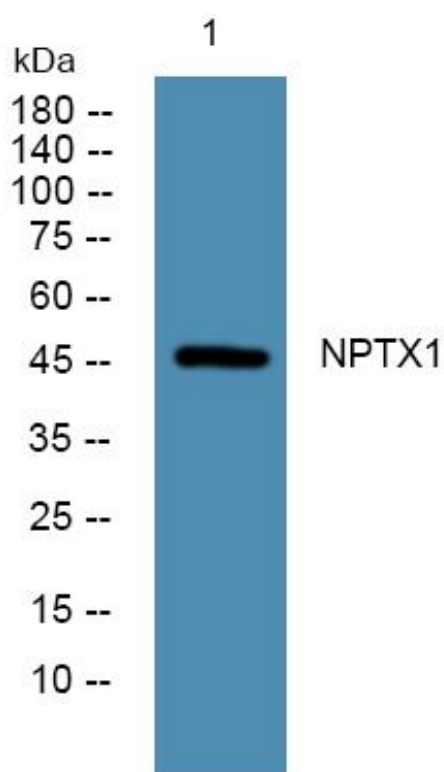


# NPTX1 Monoclonal Antibody

<b>Catalog No</b>	YP-mAb-05849
<b>Isotype</b>	IgG
<b>Reactivity</b>	Human;Rat;Mouse
<b>Applications</b>	WB
<b>Gene Name</b>	NPTX1
<b>Protein Name</b>	Neuronal pentraxin-1 (NP1) (Neuronal pentraxin I) (NP-I)
<b>Immunogen</b>	Synthesized peptide derived from human protein . at AA range: 170-250
<b>Specificity</b>	NPTX1 Monoclonal Antibody detects endogenous levels of protein.
<b>Formulation</b>	Liquid in PBS containing 50% glycerol, and 0.02% sodium azide.
<b>Source</b>	Monoclonal, Mouse,IgG
<b>Purification</b>	The antibody was affinity-purified from mouse antiserum by affinity-chromatography using epitope-specific immunogen.
<b>Dilution</b>	WB 1:500-1:2000
<b>Concentration</b>	1 mg/ml
<b>Purity</b>	≥90%
<b>Storage Stability</b>	-20°C/1 year
<b>Synonyms</b>	
<b>Observed Band</b>	47kD
<b>Cell Pathway</b>	Cytoplasmic vesicle, secretory vesicle .
<b>Tissue Specificity</b>	Chondrosarcoma,Hippocampus,
<b>Function</b>	cofactor:Binds 2 calcium ions per subunit.,function:May mediate uptake of degraded synaptic material which could play an important role in synaptic remodeling. Can mediate the neuronal and glial uptake of the snake venom toxin taipoxin.,similarity:Contains 1 pentaxin domain.,
<b>Background</b>	NPTX1 is a member of the neuronal pentraxin gene family. Neuronal pentraxin 1 is similar to the rat NP1 gene which encodes a binding protein for the snake venom toxin taipoxin. Human NPTX1 mRNA is exclusively localized to the nervous system. [provided by RefSeq, Jul 2008],
<b>matters needing attention</b>	Avoid repeated freezing and thawing!
<b>Usage suggestions</b>	This product can be used in immunological reaction related experiments. For more information, please consult technical personnel.



## Products Images



Western Blot analysis of various cells using NPTX1  
Monoclonal Antibody