

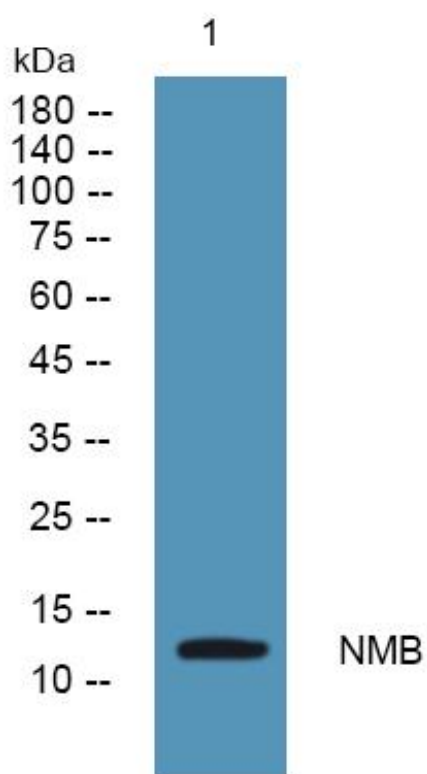


# NMB Monoclonal Antibody

<b>Catalog No</b>	YP-mAb-05841
<b>Isotype</b>	IgG
<b>Reactivity</b>	Human;Mouse
<b>Applications</b>	WB
<b>Gene Name</b>	NMB
<b>Protein Name</b>	Neuromedin-B [Cleaved into: Neuromedin-B-32; Neuromedin-B]
<b>Immunogen</b>	Synthesized peptide derived from human protein . at AA range: 20-100
<b>Specificity</b>	NMB Monoclonal Antibody detects endogenous levels of protein.
<b>Formulation</b>	Liquid in PBS containing 50% glycerol, and 0.02% sodium azide.
<b>Source</b>	Monoclonal, Mouse,IgG
<b>Purification</b>	The antibody was affinity-purified from mouse antiserum by affinity-chromatography using epitope-specific immunogen.
<b>Dilution</b>	WB 1:500-1:2000
<b>Concentration</b>	1 mg/ml
<b>Purity</b>	≥90%
<b>Storage Stability</b>	-20°C/1 year
<b>Synonyms</b>	
<b>Observed Band</b>	13kD
<b>Cell Pathway</b>	Secreted . Cell projection, neuron projection . In neurons of the retrotrapezoid nucleus//parafacial respiratory group, expressed on neuron projections which project into the pre-Botzinger complex. .
<b>Tissue Specificity</b>	Brain,Hypothalamus,Ovary,
<b>Function</b>	function:Stimulates smooth muscle contraction in a manner similar to that of bombesin.,similarity:Belongs to the bombesin/neuromedin-B/ranatensin family.,
<b>Background</b>	This gene encodes a member of the bombesin-like family of neuropeptides, which negatively regulate eating behavior. The encoded protein may regulate colonic smooth muscle contraction through binding to its cognate receptor, the neuromedin B receptor (NMBR). Polymorphisms of this gene may be associated with hunger, weight gain and obesity. Alternative splicing results in multiple transcript variants. [provided by RefSeq, Jul 2015],
<b>matters needing attention</b>	Avoid repeated freezing and thawing!

**Usage suggestions**

This product can be used in immunological reaction related experiments. For more information, please consult technical personnel.

**Products Images**

Western Blot analysis of various cells using NMB Monoclonal Antibody