

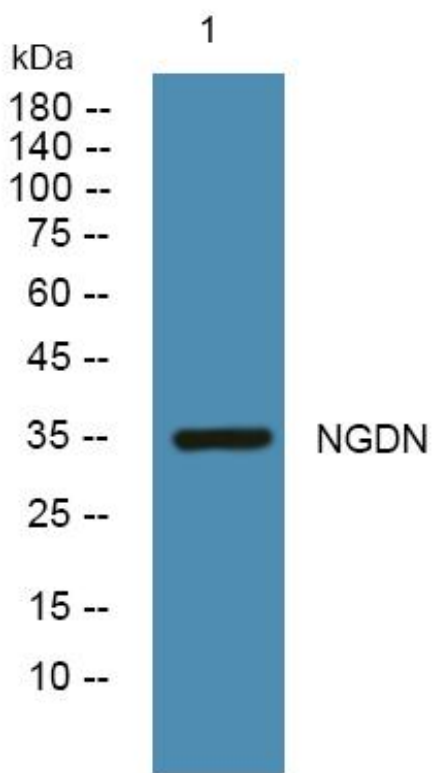


# NGDN Monoclonal Antibody

<b>Catalog No</b>	YP-mAb-05837
<b>Isotype</b>	IgG
<b>Reactivity</b>	Human;Mouse
<b>Applications</b>	WB
<b>Gene Name</b>	NGDN C14orf120
<b>Protein Name</b>	Neuroguidin (EIF4E-binding protein)
<b>Immunogen</b>	Synthesized peptide derived from human protein . at AA range: 240-320
<b>Specificity</b>	NGDN Monoclonal Antibody detects endogenous levels of protein.
<b>Formulation</b>	Liquid in PBS containing 50% glycerol, and 0.02% sodium azide.
<b>Source</b>	Monoclonal, Mouse,IgG
<b>Purification</b>	The antibody was affinity-purified from mouse antiserum by affinity-chromatography using epitope-specific immunogen.
<b>Dilution</b>	WB 1:500-1:2000
<b>Concentration</b>	1 mg/ml
<b>Purity</b>	≥90%
<b>Storage Stability</b>	-20°C/1 year
<b>Synonyms</b>	
<b>Observed Band</b>	34kD
<b>Cell Pathway</b>	Nucleus . Nucleus, nucleolus . Chromosome, centromere . Cytoplasm . Cell projection, axon . Cell projection, dendrite . Cell projection, filopodium . Detected in axons, dendrites and filopodia. Colocalized with EIF4E in neurites (By similarity). Translocated from nucleolus to nuclear foci in response to UV damage.
<b>Tissue Specificity</b>	Brain,Epithelium,Placenta,
<b>Function</b>	function:Involved in the translational repression of cytoplasmic polyadenylation element (CPE)-containing mRNAs.,similarity:Belongs to the SAS10 family.,subcellular location:Detected in axons, dendrites and filopodia. Colocalized with EIF4E in neurites.,subunit:Interacts with CPEB1 and EIF4E.,
<b>Background</b>	Neuroguidin is an EIF4E (MIM 133440)-binding protein that interacts with CPEB (MIM 607342) and functions as a translational regulatory protein during development of the vertebrate nervous system (Jung et al., 2006 [PubMed 16705177]).[supplied by OMIM, Mar 2008],
<b>matters needing attention</b>	Avoid repeated freezing and thawing!

**Usage suggestions**

This product can be used in immunological reaction related experiments. For more information, please consult technical personnel.

**Products Images**

Western Blot analysis of various cells using NGDN Monoclonal Antibody