



NDUBB Monoclonal Antibody

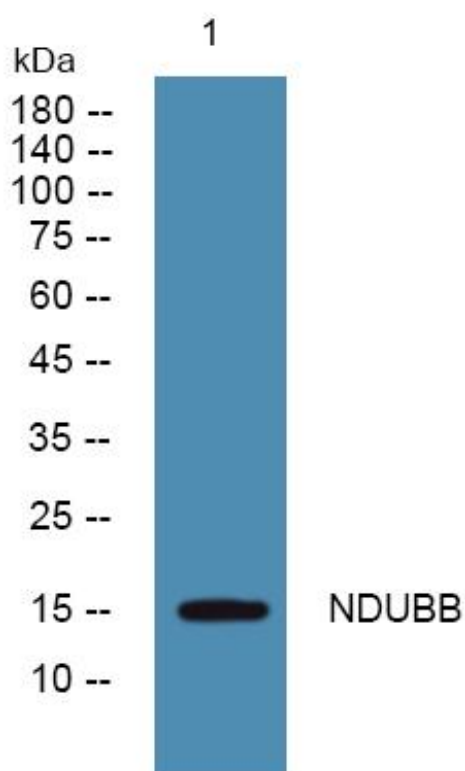
| | |
|---------------------------|--|
| Catalog No | YP-mAb-05797 |
| Isotype | IgG |
| Reactivity | Human;Mouse |
| Applications | WB |
| Gene Name | NDUFB11 UNQ111/PRO1064 |
| Protein Name | NADH dehydrogenase [ubiquinone] 1 beta subcomplex subunit 11, mitochondrial (Complex I-ESSS) (CI-ESSS) (NADH-ubiquinone oxidoreductase ESSS subunit) (Neuronal protein 17.3) (Np17.3) (p17.3) |
| Immunogen | Synthesized peptide derived from human protein . at AA range: 70-150 |
| Specificity | NDUBB Monoclonal Antibody detects endogenous levels of protein. |
| Formulation | Liquid in PBS containing 50% glycerol, and 0.02% sodium azide. |
| Source | Monoclonal, Mouse,IgG |
| Purification | The antibody was affinity-purified from mouse antiserum by affinity-chromatography using epitope-specific immunogen. |
| Dilution | WB 1:500-1:2000 |
| Concentration | 1 mg/ml |
| Purity | ≥90% |
| Storage Stability | -20°C/1 year |
| Synonyms | |
| Observed Band | 16kD |
| Cell Pathway | Mitochondrion inner membrane ; Single-pass membrane protein . The interaction with BCAP31 mediates mitochondria localization. . |
| Tissue Specificity | Ubiquitous. |
| Function | function:Accessory subunit of the mitochondrial membrane respiratory chain NADH dehydrogenase (Complex I), that is believed to be not involved in catalysis. Complex I functions in the transfer of electrons from NADH to the respiratory chain. The immediate electron acceptor for the enzyme is believed to be ubiquinone.,similarity:Belongs to the complex I NDUFB11 subunit family.,subunit:Complex I is composed of 45 different subunits.,tissue specificity:Ubiquitous., |
| Background | NDUFB11 is a component of mitochondrial complex I. Complex I catalyzes the first step in the electron transport chain, the transfer of 2 electrons from NADH to ubiquinone, coupled to the translocation of 4 protons across the membrane (Carroll et al., 2002 [PubMed 12381726]).[supplied by OMIM, Feb 2009], |

**matters needing attention**

Avoid repeated freezing and thawing!

Usage suggestions

This product can be used in immunological reaction related experiments. For more information, please consult technical personnel.

Products Images

Western Blot analysis of various cells using NDUBB Monoclonal Antibody