



SIR4 Monoclonal Antibody

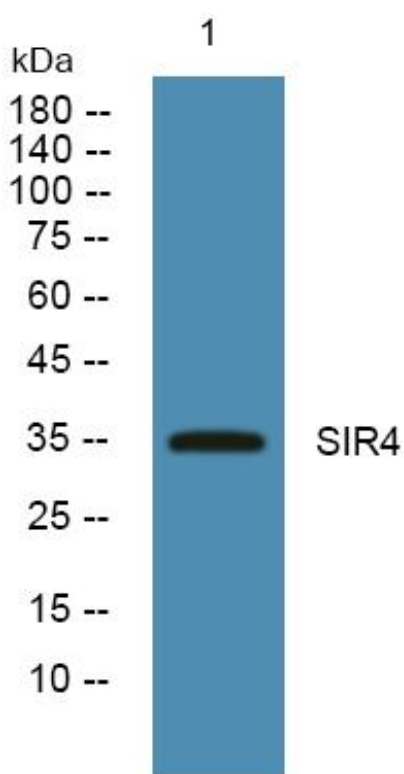
Catalog No	YP-mAb-05789
Isotype	IgG
Reactivity	Human;Mouse
Applications	WB
Gene Name	SIRT4 SIR2L4
Protein Name	NAD-dependent protein deacetylase sirtuin-4 (EC 3.5.1.-) (NAD-dependent ADP-ribosyltransferase sirtuin-4) (EC 2.4.2.-) (Regulatory protein SIR2 homolog 4) (SIR2-like protein 4)
Immunogen	Synthesized peptide derived from human protein . at AA range: 30-110
Specificity	SIR4 Monoclonal Antibody detects endogenous levels of protein.
Formulation	Liquid in PBS containing 50% glycerol, and 0.02% sodium azide.
Source	Monoclonal, Mouse,IgG
Purification	The antibody was affinity-purified from mouse antiserum by affinity-chromatography using epitope-specific immunogen.
Dilution	WB 1:500-1:2000
Concentration	1 mg/ml
Purity	≥90%
Storage Stability	-20°C/1 year
Synonyms	
Observed Band	34kD
Cell Pathway	Mitochondrion matrix .
Tissue Specificity	Detected in vascular smooth muscle and striated muscle. Detected in insulin-producing beta-cells in pancreas islets of Langerhans (at protein level). Widely expressed. Weakly expressed in leukocytes and fetal thymus.
Function	catalytic activity:NAD(+) + an acetylprotein = nicotinamide + O-acetyl-ADP-ribose + a protein.,cofactor:Binds 1 zinc ion per subunit.,function:Probable NAD-dependent deacetylase.,similarity:Belongs to the sirtuin family.,similarity:Contains 1 deacetylase sirtuin-type domain.,tissue specificity:Widely expressed. Weakly expressed in leukocytes and fetal thymus.,
Background	This gene encodes a member of the sirtuin family of proteins, homologs to the yeast Sir2 protein. Members of the sirtuin family are characterized by a sirtuin core domain and grouped into four classes. The functions of human sirtuins have not yet been determined; however, yeast sirtuin proteins are known to regulate epigenetic gene silencing and suppress recombination of rDNA. Studies suggest that the human sirtuins may function as intracellular regulatory proteins with mono-ADP-ribosyltransferase activity. The protein encoded by this gene is included in class IV of the sirtuin family. [provided by RefSeq, Jul 2008],

**matters needing attention**

Avoid repeated freezing and thawing!

Usage suggestions

This product can be used in immunological reaction related experiments. For more information, please consult technical personnel.

Products Images

Western Blot analysis of various cells using SIR4 Monoclonal Antibody