

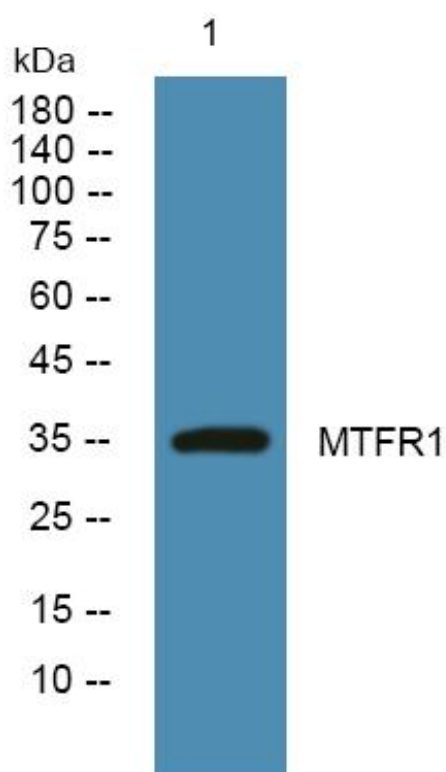


# MTFR1 Monoclonal Antibody

<b>Catalog No</b>	YP-mAb-05736
<b>Isotype</b>	IgG
<b>Reactivity</b>	Human;Rat;Mouse
<b>Applications</b>	WB
<b>Gene Name</b>	MTFR1 CHPPR KIAA0009
<b>Protein Name</b>	Mitochondrial fission regulator 1 (Chondrocyte protein with a poly-proline region)
<b>Immunogen</b>	Synthesized peptide derived from human protein . at AA range: 160-240
<b>Specificity</b>	MTFR1 Monoclonal Antibody detects endogenous levels of protein.
<b>Formulation</b>	Liquid in PBS containing 50% glycerol, and 0.02% sodium azide.
<b>Source</b>	Monoclonal, Mouse,IgG
<b>Purification</b>	The antibody was affinity-purified from mouse antiserum by affinity-chromatography using epitope-specific immunogen.
<b>Dilution</b>	WB 1:500-1:2000
<b>Concentration</b>	1 mg/ml
<b>Purity</b>	≥90%
<b>Storage Stability</b>	-20°C/1 year
<b>Synonyms</b>	
<b>Observed Band</b>	36kD
<b>Cell Pathway</b>	Mitochondrion . May be associated with the inner and the outer mitochondrial membrane. .
<b>Tissue Specificity</b>	Bone marrow,Epithelium,Liver,Lung,Testis,Uterus,
<b>Function</b>	function:Promote mitochondrial fission.,PTM:Phosphorylated upon DNA damage, probably by ATM or ATR.,similarity:Belongs to the MTFR1/FAM54 family.,
<b>Background</b>	This gene encodes a mitochondrial protein that is characterized by a poly-proline rich region. A chicken homolog of this protein promotes mitochondrial fission and the mouse homolog protects cells from oxidative stress. A related pseudogene of this gene is found on chromosome X. [provided by RefSeq, Mar 2009],
<b>matters needing attention</b>	Avoid repeated freezing and thawing!
<b>Usage suggestions</b>	This product can be used in immunological reaction related experiments. For more information, please consult technical personnel.



## Products Images



Western Blot analysis of various cells using MTFR1 Monoclonal Antibody