

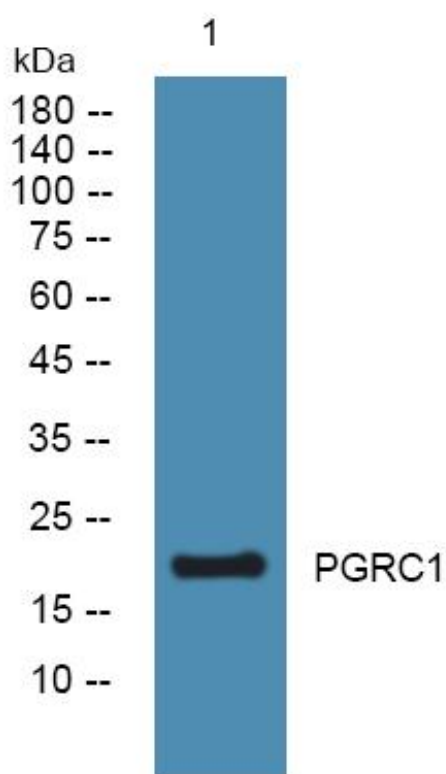


# PGRC1 Monoclonal Antibody

<b>Catalog No</b>	YP-mAb-05726
<b>Isotype</b>	IgG
<b>Reactivity</b>	Human;Rat;Mouse
<b>Applications</b>	WB
<b>Gene Name</b>	PGRMC1 HPR6.6 PGRMC
<b>Protein Name</b>	Membrane-associated progesterone receptor component 1 (mPR)
<b>Immunogen</b>	Synthesized peptide derived from human protein . at AA range: 20-100
<b>Specificity</b>	PGRC1 Monoclonal Antibody detects endogenous levels of protein.
<b>Formulation</b>	Liquid in PBS containing 50% glycerol, and 0.02% sodium azide.
<b>Source</b>	Monoclonal, Mouse,IgG
<b>Purification</b>	The antibody was affinity-purified from mouse antiserum by affinity-chromatography using epitope-specific immunogen.
<b>Dilution</b>	WB 1:500-1:2000
<b>Concentration</b>	1 mg/ml
<b>Purity</b>	≥90%
<b>Storage Stability</b>	-20°C/1 year
<b>Synonyms</b>	
<b>Observed Band</b>	21kD
<b>Cell Pathway</b>	Microsome membrane ; Single-pass membrane protein . Smooth endoplasmic reticulum membrane ; Single-pass membrane protein . Mitochondrion outer membrane ; Single-pass membrane protein ; Extracellular side .
<b>Tissue Specificity</b>	Widely expressed, with highest expression in liver and kidney. Expressed by endometrial glands and stroma (at protein level) (PubMed:23793472).
<b>Function</b>	domain:The cytochrome b5 heme-binding domain lacks the conserved iron-binding His residues at positions 107 and 131.,function:Receptor for progesterone.,similarity:Belongs to the cytochrome b5 family. MAPR subfamily.,similarity:Contains 1 cytochrome b5 heme-binding domain.,tissue specificity:Widely expressed, with highest expression in liver and kidney.,
<b>Background</b>	This gene encodes a putative membrane-associated progesterone steroid receptor. The protein is expressed predominantly in the liver and kidney. [provided by RefSeq, Mar 2010],
<b>matters needing attention</b>	Avoid repeated freezing and thawing!

**Usage suggestions**

This product can be used in immunological reaction related experiments. For more information, please consult technical personnel.

**Products Images**

Western Blot analysis of various cells using PGRC1 Monoclonal Antibody