

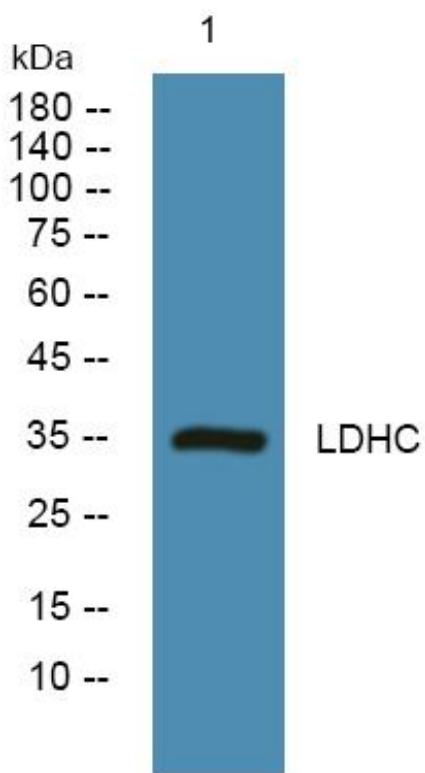


LDHC Monoclonal Antibody

Catalog No	YP-mAb-05699
Isotype	IgG
Reactivity	Human;Rat;Mouse
Applications	WB
Gene Name	LDHC LDH3 LDHX
Protein Name	L-lactate dehydrogenase C chain (LDH-C) (EC 1.1.1.27) (Cancer/testis antigen 32) (CT32) (LDH testis subunit) (LDH-X)
Immunogen	Synthesized peptide derived from human protein . at AA range: 170-250
Specificity	LDHC Monoclonal Antibody detects endogenous levels of protein.
Formulation	Liquid in PBS containing 50% glycerol, and 0.02% sodium azide.
Source	Monoclonal, Mouse,IgG
Purification	The antibody was affinity-purified from mouse antiserum by affinity-chromatography using epitope-specific immunogen.
Dilution	WB 1:500-1:2000
Concentration	1 mg/ml
Purity	≥90%
Storage Stability	-20°C/1 year
Synonyms	
Observed Band	36kD
Cell Pathway	Cytoplasm.
Tissue Specificity	Brain,Testis,
Function	catalytic activity:(S)-lactate + NAD(+) = pyruvate + NADH.,function:Possible role in sperm motility.,online information:Lactate dehydrogenase entry,pathway:Fermentation; pyruvate fermentation to lactate; (S)-lactate from pyruvate: step 1/1.,similarity:Belongs to the LDH/MDH superfamily. LDH family.,subunit:Homotetramer.,
Background	Lactate dehydrogenase C catalyzes the conversion of L-lactate and NAD to pyruvate and NADH in the final step of anaerobic glycolysis. LDHC is testis-specific and belongs to the lactate dehydrogenase family. Two transcript variants have been detected which differ in the 5' untranslated region. [provided by RefSeq, Jul 2008],
matters needing attention	Avoid repeated freezing and thawing!

**Usage suggestions**

This product can be used in immunological reaction related experiments. For more information, please consult technical personnel.

Products Images

Western Blot analysis of various cells using LDHC Monoclonal Antibody