

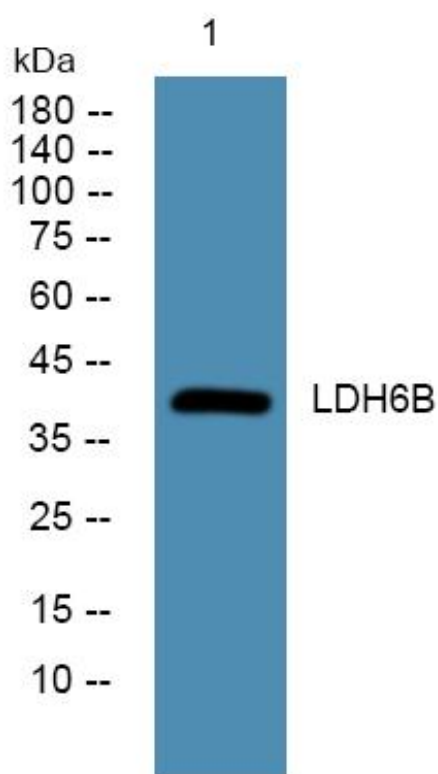


LDH6B Monoclonal Antibody

| | |
|----------------------------------|---|
| Catalog No | YP-mAb-05698 |
| Isotype | IgG |
| Reactivity | Human;Rat;Mouse; |
| Applications | WB |
| Gene Name | LDHAL6B LDHAL6 LDHL |
| Protein Name | L-lactate dehydrogenase A-like 6B (EC 1.1.1.27) |
| Immunogen | Synthesized peptide derived from human protein . at AA range: 320-400 |
| Specificity | LDH6B Monoclonal Antibody detects endogenous levels of protein. |
| Formulation | Liquid in PBS containing 50% glycerol, and 0.02% sodium azide. |
| Source | Monoclonal, Mouse,IgG |
| Purification | The antibody was affinity-purified from mouse antiserum by affinity-chromatography using epitope-specific immunogen. |
| Dilution | WB 1:500-1:2000 |
| Concentration | 1 mg/ml |
| Purity | ≥90% |
| Storage Stability | -20°C/1 year |
| Synonyms | |
| Observed Band | 41kD |
| Cell Pathway | nucleus,mitochondrion,mitochondrial matrix, |
| Tissue Specificity | Testis specific. |
| Function | catalytic activity:(S)-lactate + NAD(+) = pyruvate + NADH.,caution:It is uncertain whether Met-1 or Met-50 is the initiator.,developmental stage:Higher expression level in adult testis as compared to 6-week-old fetal testis.,pathway:Fermentation; pyruvate fermentation to lactate; (S)-lactate from pyruvate: step 1/1.,similarity:Belongs to the LDH/MDH superfamily. LDH family.,tissue specificity:Testis specific., |
| Background | catalytic activity:(S)-lactate + NAD(+) = pyruvate + NADH.,caution:It is uncertain whether Met-1 or Met-50 is the initiator.,developmental stage:Higher expression level in adult testis as compared to 6-week-old fetal testis.,pathway:Fermentation; pyruvate fermentation to lactate; (S)-lactate from pyruvate: step 1/1.,similarity:Belongs to the LDH/MDH superfamily. LDH family.,tissue specificity:Testis specific., |
| matters needing attention | Avoid repeated freezing and thawing! |

**Usage suggestions**

This product can be used in immunological reaction related experiments. For more information, please consult technical personnel.

Products Images

Western Blot analysis of various cells using LDH6B Monoclonal Antibody