



# DLX1 Monoclonal Antibody

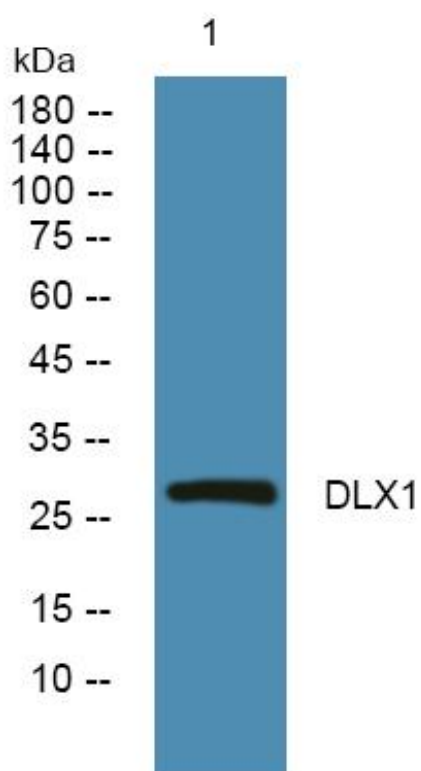
|                           |  |
|---------------------------|--|
| <b>Catalog No</b>         | YP-mAb-05645   |
| <b>Isotype</b>            | IgG  |
| <b>Reactivity</b>         | Human;Rat;Mouse  |
| <b>Applications</b>       | WB   |
| <b>Gene Name</b>          | DLX1   |
| <b>Protein Name</b>       | Homeobox protein DLX-1   |
| <b>Immunogen</b>          | Synthesized peptide derived from part region of human protein  |
| <b>Specificity</b>        | DLX1 Monoclonal Antibody detects endogenous levels of protein.   |
| <b>Formulation</b>        | Liquid in PBS containing 50% glycerol, and 0.02% sodium azide.   |
| <b>Source</b>             | Monoclonal, Mouse,IgG  |
| <b>Purification</b>       | The antibody was affinity-purified from mouse antiserum by affinity-chromatography using epitope-specific immunogen.   |
| <b>Dilution</b>           | WB 1:500-1:2000  |
| <b>Concentration</b>      | 1 mg/ml  |
| <b>Purity</b>             | ≥90%   |
| <b>Storage Stability</b>  | -20°C/1 year   |
| <b>Synonyms</b>           |  |
| <b>Observed Band</b>      | 28kD   |
| <b>Cell Pathway</b>       | Nucleus .  |
| <b>Tissue Specificity</b> | Expressed in hematopoietic cell lines.   |
| <b>Function</b>           | function:Likely to play a regulatory role in the development of the ventral forebrain. May play a role in craniofacial patterning and morphogenesis and may be involved in the early development of diencephalic subdivisions.,similarity:Belongs to the distal-less homeobox family.,similarity:Contains 1 homeobox DNA-binding domain.,  |
| <b>Background</b>         | This gene encodes a member of a homeobox transcription factor gene family similar to the Drosophila distal-less gene. The encoded protein is localized to the nucleus where it may function as a transcriptional regulator of signals from multiple TGF-β superfamily members. The encoded protein may play a role in the control of craniofacial patterning and the differentiation and survival of inhibitory neurons in the forebrain. This gene is located in a tail-to-tail configuration with another member of the family on the long arm of chromosome 2. Alternatively spliced transcript variants encoding different isoforms have been described. [provided by RefSeq, Jul 2008], |

**matters needing attention**

Avoid repeated freezing and thawing!

**Usage suggestions**

This product can be used in immunological reaction related experiments. For more information, please consult technical personnel.

**Products Images**

Western Blot analysis of various cells using DLX1 Monoclonal Antibody