

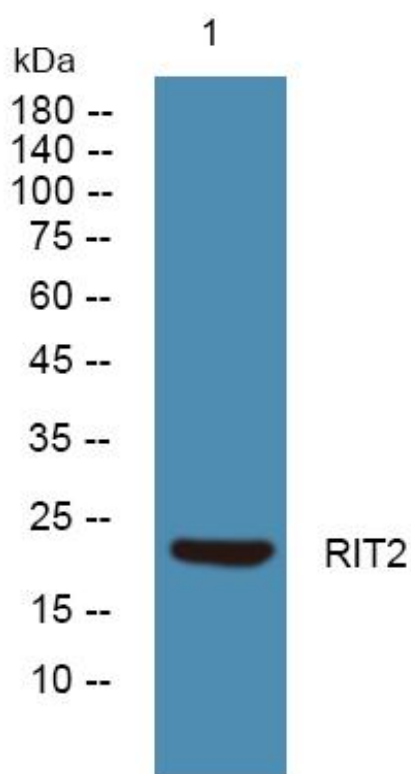


RIT2 Monoclonal Antibody

Catalog No	YP-mAb-05621
Isotype	IgG
Reactivity	Human;Rat;Mouse
Applications	WB
Gene Name	RIT2 RIN ROC2
Protein Name	GTP-binding protein Rit2 (Ras-like protein expressed in neurons) (Ras-like without CAAX protein 2)
Immunogen	Synthesized peptide derived from part region of human protein
Specificity	RIT2 Monoclonal Antibody detects endogenous levels of protein.
Formulation	Liquid in PBS containing 50% glycerol, and 0.02% sodium azide.
Source	Monoclonal, Mouse,IgG
Purification	The antibody was affinity-purified from mouse antiserum by affinity-chromatography using epitope-specific immunogen.
Dilution	WB 1:500-1:2000
Concentration	1 mg/ml
Purity	≥90%
Storage Stability	-20°C/1 year
Synonyms	
Observed Band	23kd
Cell Pathway	Nucleus . Cell membrane . Colocalizes with PLXNB3 at the plasma membrane (PubMed:16122393). .
Tissue Specificity	Neuron-specific.
Function	function: Binds and exchanges GTP and GDP.,miscellaneous: Shows rapid uncatalyzed guanine nucleotide dissociation rates, which are much faster than those of most Ras subfamily members.,similarity: Belongs to the small GTPase superfamily. Ras family.,subunit: Interacts with MLLT4, the C-terminal domain of RALGDS and RLF, but not with RIN1 and PIK3CA. RLF binds exclusively to the active GTP-bound form (By similarity). Binds calmodulin.,tissue specificity: Neuron-specific.,
Background	RIN belongs to the RAS (HRAS; MIM 190020) superfamily of small GTPases (Shao et al., 1999 [PubMed 10545207]).[supplied by OMIM, Mar 2008],
matters needing attention	Avoid repeated freezing and thawing!

**Usage suggestions**

This product can be used in immunological reaction related experiments. For more information, please consult technical personnel.

Products Images

Western Blot analysis of various cells using RIT2 Monoclonal Antibody