

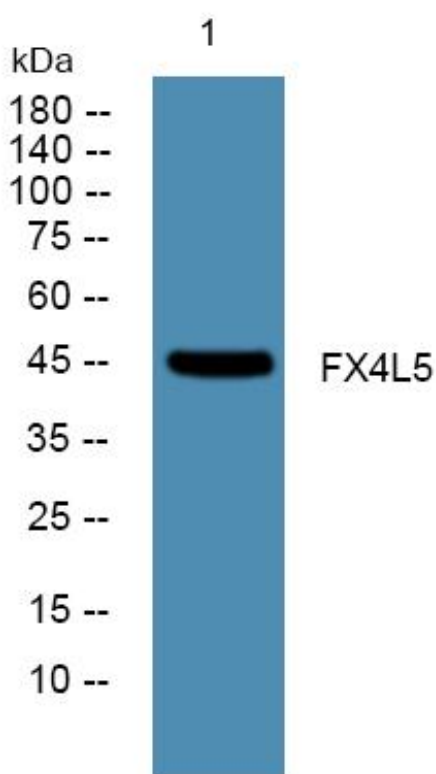


FX4L5 Monoclonal Antibody

Catalog No	YP-mAb-05590
Isotype	IgG
Reactivity	Human;Rat;Mouse;
Applications	WB
Gene Name	FOXD4L5
Protein Name	Forkhead box protein D4-like 5 (FOXD4-like 5)
Immunogen	Synthesized peptide derived from part region of human protein
Specificity	FX4L5 Monoclonal Antibody detects endogenous levels of protein.
Formulation	Liquid in PBS containing 50% glycerol, and 0.02% sodium azide.
Source	Monoclonal, Mouse,IgG
Purification	The antibody was affinity-purified from mouse antiserum by affinity-chromatography using epitope-specific immunogen.
Dilution	WB 1:500-1:2000
Concentration	1 mg/ml
Purity	≥90%
Storage Stability	-20°C/1 year
Synonyms	
Observed Band	45kD
Cell Pathway	Nucleus .
Tissue Specificity	
Function	miscellaneous:5 FOXD4-like proteins (FOXD4L2, FOXD4L3, FOXD4L4, FOXD4L5 and FOXD4L6) are encoded by a strongly repeated region of the 9q12 chromosome region. They are very similar and it is therefore difficult to provide a clear and unambiguous protein sequence. Our sequences are in agreement with HGNC nomenclature.,similarity:Contains 1 fork-head DNA-binding domain.,
Background	miscellaneous:5 FOXD4-like proteins (FOXD4L2, FOXD4L3, FOXD4L4, FOXD4L5 and FOXD4L6) are encoded by a strongly repeated region of the 9q12 chromosome region. They are very similar and it is therefore difficult to provide a clear and unambiguous protein sequence. Our sequences are in agreement with HGNC nomenclature.,similarity:Contains 1 fork-head DNA-binding domain.,
matters needing attention	Avoid repeated freezing and thawing!

**Usage suggestions**

This product can be used in immunological reaction related experiments. For more information, please consult technical personnel.

Products Images

Western Blot analysis of various cells using FX4L5 Monoclonal Antibody