



## EF1D Monoclonal Antibody

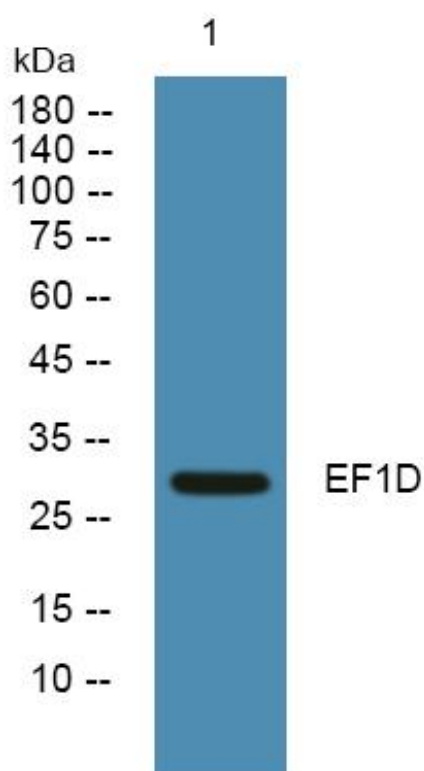
|                           |  |
|---------------------------|--|
| <b>Catalog No</b>         | YP-mAb-05568   |
| <b>Isotype</b>            | IgG  |
| <b>Reactivity</b>         | Human;Mouse;Rat  |
| <b>Applications</b>       | WB   |
| <b>Gene Name</b>          | EEF1D EF1D   |
| <b>Protein Name</b>       | Elongation factor 1-delta (EF-1-delta) (Antigen NY-CO-4)   |
| <b>Immunogen</b>          | Synthesized peptide derived from part region of human protein  |
| <b>Specificity</b>        | EF1D Monoclonal Antibody detects endogenous levels of protein.   |
| <b>Formulation</b>        | Liquid in PBS containing 50% glycerol, and 0.02% sodium azide.   |
| <b>Source</b>             | Monoclonal, Mouse,IgG  |
| <b>Purification</b>       | The antibody was affinity-purified from mouse antiserum by affinity-chromatography using epitope-specific immunogen.   |
| <b>Dilution</b>           | WB 1:500-1:2000  |
| <b>Concentration</b>      | 1 mg/ml  |
| <b>Purity</b>             | ≥90%   |
| <b>Storage Stability</b>  | -20°C/1 year   |
| <b>Synonyms</b>           |  |
| <b>Observed Band</b>      | 30kD   |
| <b>Cell Pathway</b>       | [Isoform 2]: Nucleus .   |
| <b>Tissue Specificity</b> | Isoform 2 is specifically expressed in brain, cerebellum and testis.   |
| <b>Function</b>           | function:EF-1-beta and EF-1-delta stimulate the exchange of GDP bound to EF-1-alpha to GTP.,PTM:Phosphorylated upon DNA damage, probably by ATM or ATR.,similarity:Belongs to the EF-1-beta/EF-1-delta family.,subunit:EF-1 is composed of 4 subunits: alpha, beta, delta, and gamma.,   |
| <b>Background</b>         | eukaryotic translation elongation factor 1 delta(EEF1D) Homo sapiens This gene encodes a subunit of the elongation factor-1 complex, which is responsible for the enzymatic delivery of aminoacyl tRNAs to the ribosome. This subunit, delta, functions as guanine nucleotide exchange factor. It is reported that following HIV-1 infection, this subunit interacts with HIV-1 Tat. This interaction results in repression of translation of host cell proteins and enhanced translation of viral proteins. Several alternatively spliced transcript variants encoding multiple isoforms have been found for this gene. Related pseudogenes have been defined on chromosomes 1, 6, 7, 9, 11, 13, 17, 19.[provided by RefSeq, Aug 2010], |

**matters needing attention**

Avoid repeated freezing and thawing!

**Usage suggestions**

This product can be used in immunological reaction related experiments. For more information, please consult technical personnel.

**Products Images**

Western Blot analysis of various cells using EF1D Monoclonal Antibody