

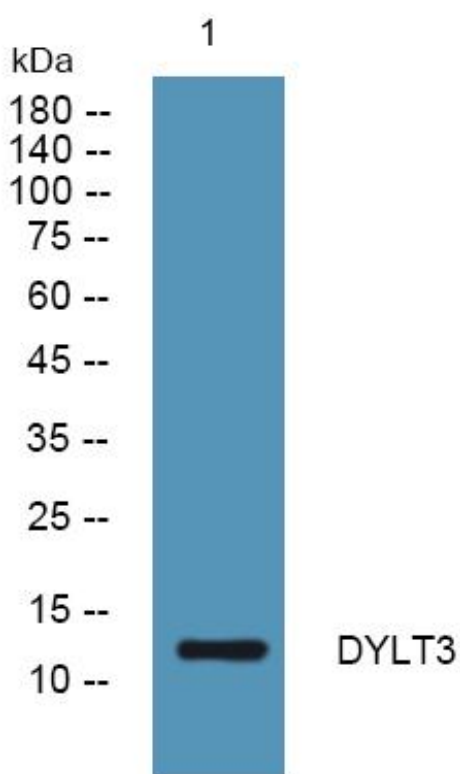


DYLT3 Monoclonal Antibody

Catalog No	YP-mAb-05547
Isotype	IgG
Reactivity	Human;Rat;Mouse;
Applications	WB
Gene Name	DYNLT3 TCTE1L TCTE1XL
Protein Name	Dynein light chain Tctex-type 3 (Protein 91/23) (T-complex-associated testis-expressed 1-like)
Immunogen	Synthesized peptide derived from part region of human protein AA range: 1-50
Specificity	DYLT3 Monoclonal Antibody detects endogenous levels of protein.
Formulation	Liquid in PBS containing 50% glycerol, and 0.02% sodium azide.
Source	Monoclonal, Mouse,IgG
Purification	The antibody was affinity-purified from mouse antiserum by affinity-chromatography using epitope-specific immunogen.
Dilution	WB 1:500-1:2000
Concentration	1 mg/ml
Purity	≥90%
Storage Stability	-20°C/1 year
Synonyms	
Observed Band	12kD
Cell Pathway	Nucleus. Cytoplasm, cytoskeleton. Chromosome, centromere, kinetochore. Colocalizes with BUB3 at kinetochores specifically during prometaphase.
Tissue Specificity	Placenta,Subthalamic nucleus,
Function	caution:Was originally (PubMed:8004092) thought to be a candidate for RP3.,similarity:Belongs to the dynein light chain Tctex-type family.,
Background	dynein light chain Tctex-type 3(DYNLT3) Homo sapiens This gene encodes a member of a subclass of dynein light chains. The encoded protein homodimerizes and forms the light chain component of the cytoplasmic dynein motor protein complex. This protein may be important for binding dynein to specific cargos including the spindle checkpoint protein BUB3. This protein may also function independently of dynein as a transcriptional modulator. Pseudogenes of this gene are found on chromosomes 2 and 20.[provided by RefSeq, Mar 2010],
matters needing attention	Avoid repeated freezing and thawing!

**Usage suggestions**

This product can be used in immunological reaction related experiments. For more information, please consult technical personnel.

Products Images

Western Blot analysis of various cells using DYLT3 Monoclonal Antibody