



## RmAb3 Monoclonal Antibody

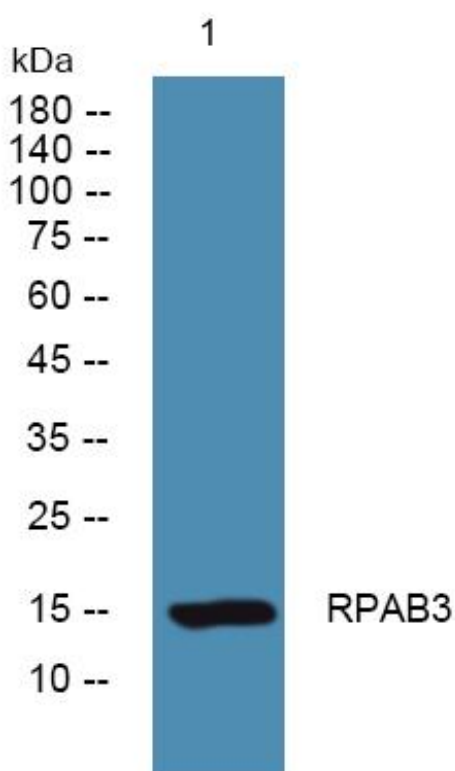
<b>Catalog No</b>	YP-mAb-05542
<b>Isotype</b>	IgG
<b>Reactivity</b>	Human;Mouse
<b>Applications</b>	WB
<b>Gene Name</b>	POLR2H
<b>Protein Name</b>	DNA-directed RNA polymerases I, II, and III subunit RPABC3 (RNA polymerases I, II, and III subunit ABC3) (DNA-directed RNA polymerase II subunit H) (DNA-directed RNA polymerases I, II, and III 17.1 kD)
<b>Immunogen</b>	Synthesized peptide derived from part region of human protein
<b>Specificity</b>	RPAB3 Monoclonal Antibody detects endogenous levels of protein.
<b>Formulation</b>	Liquid in PBS containing 50% glycerol, and 0.02% sodium azide.
<b>Source</b>	Monoclonal, Mouse,IgG
<b>Purification</b>	The antibody was affinity-purified from mouse antiserum by affinity-chromatography using epitope-specific immunogen.
<b>Dilution</b>	WB 1:500-1:2000
<b>Concentration</b>	1 mg/ml
<b>Purity</b>	≥90%
<b>Storage Stability</b>	-20°C/1 year
<b>Synonyms</b>	
<b>Observed Band</b>	22kD
<b>Cell Pathway</b>	Nucleus, nucleolus .
<b>Tissue Specificity</b>	B-cell lymphoma,Cervix carcinoma,Placenta,
<b>Function</b>	function:DNA-dependent RNA polymerase catalyzes the transcription of DNA into RNA using the four ribonucleoside triphosphates as substrates. Common component of RNA polymerases I, II and III which synthesize ribosomal RNA precursors, mRNA precursors and many functional non-coding RNAs, and small RNAs, such as 5S rRNA and tRNAs, respectively.,similarity:Belongs to the eukaryotic RPB8 RNA polymerase subunit family.,subunit:Component of the RNA polymerase I (Pol I), RNA polymerase II (Pol II) and RNA polymerase III (Pol III) complexes consisting of at least 13, 12 and 17 subunits, respectively.,
<b>Background</b>	The three eukaryotic RNA polymerases are complex multisubunit enzymes that play a central role in the transcription of nuclear genes. This gene encodes an essential and highly conserved subunit of RNA polymerase II that is shared by the other two eukaryotic DNA-directed RNA polymerases, I and III. Alternative splicing results in multiple transcript variants of this gene. [provided by RefSeq, Jul 2013],

**matters needing attention**

Avoid repeated freezing and thawing!

**Usage suggestions**

This product can be used in immunological reaction related experiments. For more information, please consult technical personnel.

**Products Images**

Western Blot analysis of various cells using RmAb3 Monoclonal Antibody