



RPC10 Monoclonal Antibody

Catalog No	YP-mAb-05536
Isotype	IgG
Reactivity	Human;Mouse
Applications	WB
Gene Name	POLR3K RPC11 My010
Protein Name	DNA-directed RNA polymerase III subunit RPC10 (RNA polymerase III subunit C10) (DNA-directed RNA polymerase III subunit K) (RNA polymerase III 12.5 kDa subunit) (RPC12.5) (RNA polymerase III subunit C)
Immunogen	Synthesized peptide derived from part region of human protein AA range: 51-100
Specificity	RPC10 Monoclonal Antibody detects endogenous levels of protein.
Formulation	Liquid in PBS containing 50% glycerol, and 0.02% sodium azide.
Source	Monoclonal, Mouse,IgG
Purification	The antibody was affinity-purified from mouse antiserum by affinity-chromatography using epitope-specific immunogen.
Dilution	WB 1:500-1:2000
Concentration	1 mg/ml
Purity	≥90%
Storage Stability	-20°C/1 year
Synonyms	
Observed Band	11kD
Cell Pathway	Nucleus, nucleolus .
Tissue Specificity	Fetal brain,Uterus,
Function	function:DNA-dependent RNA polymerase catalyzes the transcription of DNA into RNA using the four ribonucleoside triphosphates as substrates. Component of RNA polymerase III which synthesizes small RNAs, such as 5S rRNA and tRNAs.,similarity:Belongs to the archaeal rpoM/eukaryotic RPA12/RPB9/RPC11 RNA polymerase family.,similarity:Contains 1 TFIIS-type zinc finger.,subunit:Component of the RNA polymerase III (Pol III) complex consisting of 17 subunits.,
Background	This gene encodes a small essential subunit of RNA polymerase III, the polymerase responsible for synthesizing transfer and small ribosomal RNAs in eukaryotes. The carboxy-terminal domain of this subunit shares a high degree of sequence similarity to the carboxy-terminal domain of an RNA polymerase II elongation factor. This similarity in sequence is supported by functional studies showing that this subunit is required for proper pausing and termination during transcription. Pseudogenes of this gene are found on chromosomes 13 and



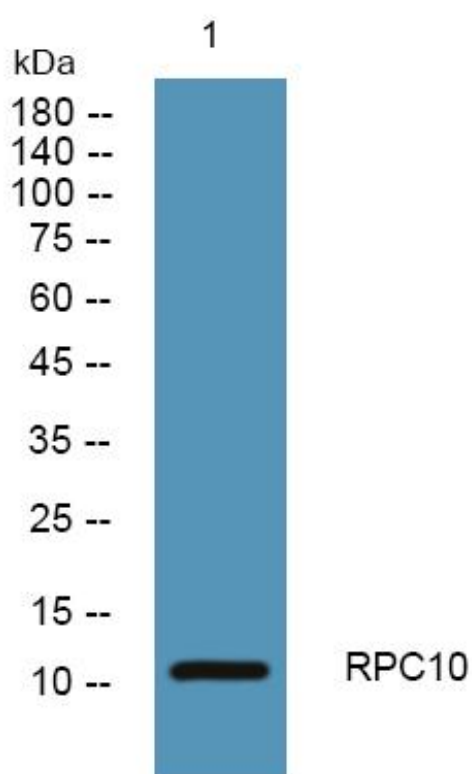
17.[provided by RefSeq, Jul 2010],

matters needing attention

Avoid repeated freezing and thawing!

Usage suggestions

This product can be used in immunological reaction related experiments. For more information, please consult technical personnel.

Products Images

Western Blot analysis of various cells using RPC10 Monoclonal Antibody