

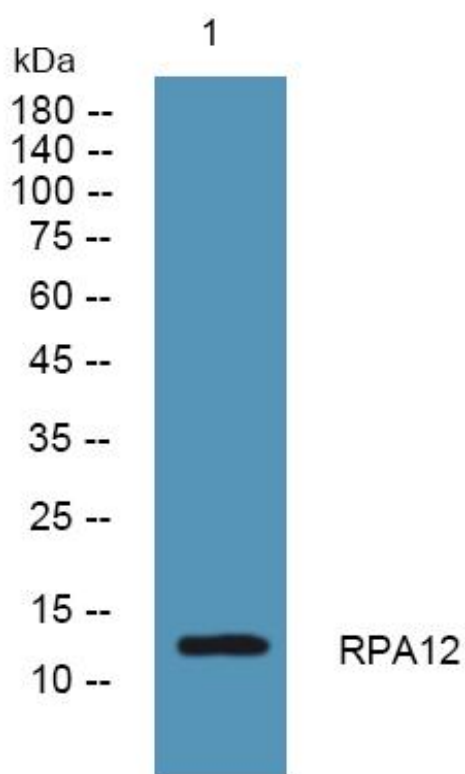


RPA12 Monoclonal Antibody

Catalog No	YP-mAb-05530
Isotype	IgG
Reactivity	Human;Mouse;Rat
Applications	WB
Gene Name	ZNRD1 RPA12
Protein Name	DNA-directed RNA polymerase I subunit RPA12 (Zinc ribbon domain-containing protein 1)
Immunogen	Synthesized peptide derived from part region of human protein
Specificity	RPA12 Monoclonal Antibody detects endogenous levels of protein.
Formulation	Liquid in PBS containing 50% glycerol, and 0.02% sodium azide.
Source	Monoclonal, Mouse,IgG
Purification	The antibody was affinity-purified from mouse antiserum by affinity-chromatography using epitope-specific immunogen.
Dilution	WB 1:500-1:2000
Concentration	1 mg/ml
Purity	≥90%
Storage Stability	-20°C/1 year
Synonyms	
Observed Band	13kD
Cell Pathway	Nucleus, nucleolus .
Tissue Specificity	Peripheral blood leukocyte,Skeletal muscle,Skin,
Function	function:DNA-dependent RNA polymerase catalyzes the transcription of DNA into RNA using the four ribonucleoside triphosphates as substrates. Component of RNA polymerase I which synthesizes ribosomal RNA precursors.,similarity:Belongs to the archaeal rpoM/eukaryotic RPA12/RPB9/RPC11 RNA polymerase family.,similarity:Contains 1 TFIIS-type zinc finger.,subunit:Component of the RNA polymerase I (Pol I) complex consisting of at least 13 subunits.,
Background	This gene encodes a DNA-directed RNA polymerase I subunit. The encoded protein contains two potential zinc-binding motifs and may play a role in regulation of cell proliferation. The encoded protein may be involved in cancer and human immunodeficiency virus progression. Alternative splicing results in multiple transcript variants. [provided by RefSeq, Jul 2013],
matters needing attention	Avoid repeated freezing and thawing!

**Usage suggestions**

This product can be used in immunological reaction related experiments. For more information, please consult technical personnel.

Products Images

Western Blot analysis of various cells using RPA12 Monoclonal Antibody