



# PSF2 Monoclonal Antibody

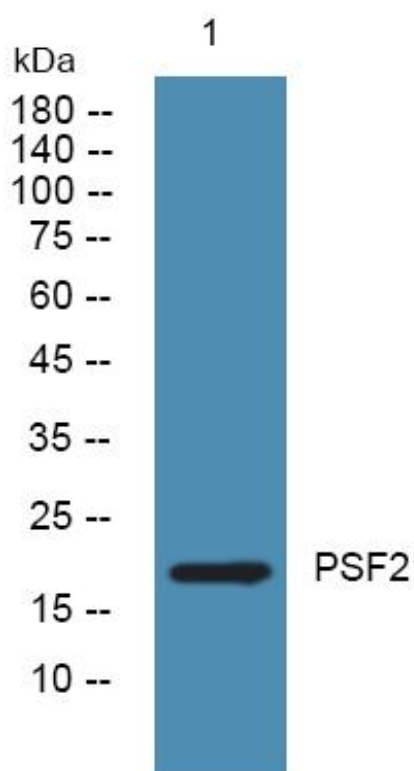
<b>Catalog No</b>	YP-mAb-05523
<b>Isotype</b>	IgG
<b>Reactivity</b>	Human;Mouse
<b>Applications</b>	WB
<b>Gene Name</b>	GINS2 PSF2 CGI-122 DC5 HSPC037
<b>Protein Name</b>	DNA replication complex GINS protein PSF2 (GINS complex subunit 2)
<b>Immunogen</b>	Synthesized peptide derived from part region of human protein
<b>Specificity</b>	PSF2 Monoclonal Antibody detects endogenous levels of protein.
<b>Formulation</b>	Liquid in PBS containing 50% glycerol, and 0.02% sodium azide.
<b>Source</b>	Monoclonal, Mouse,IgG
<b>Purification</b>	The antibody was affinity-purified from mouse antiserum by affinity-chromatography using epitope-specific immunogen.
<b>Dilution</b>	WB 1:500-1:2000
<b>Concentration</b>	1 mg/ml
<b>Purity</b>	≥90%
<b>Storage Stability</b>	-20°C/1 year
<b>Synonyms</b>	
<b>Observed Band</b>	20kD
<b>Cell Pathway</b>	Nucleus . Chromosome . Associates with chromatin. .
<b>Tissue Specificity</b>	Brain,Dendritic cell,Umbilical cord blood,
<b>Function</b>	function:The GINS complex plays an essential role in the initiation of DNA replication, and progression of DNA replication forks. GINS complex seems to bind preferentially to single-stranded DNA.,mass spectrometry:This is the measured mass for the GINS complex PubMed:17557111,PTM:Phosphorylated upon DNA damage, probably by ATM or ATR.,similarity:Belongs to the GINS2/PSF2 family.,subunit:Component of the GINS complex which is a heterotetramer of GINS1, GINS2, GINS3 and GINS4. Forms a stable subcomplex with GINS3. GINS complex interacts with DNA primase in vitro.,
<b>Background</b>	The yeast heterotetrameric GINS complex is made up of Sld5 (GIN4; MIM 610611), Psf1 (GIN1; MIM 610608), Psf2, and Psf3 (GIN3; MIM 610610). The formation of this complex is essential for the initiation of DNA replication in yeast and Xenopus egg extracts (Ueno et al., 2005 [PubMed 16287864]). See GINS1 for additional information about the GINS complex.[supplied by OMIM, Mar 2008],

**matters needing attention**

Avoid repeated freezing and thawing!

**Usage suggestions**

This product can be used in immunological reaction related experiments. For more information, please consult technical personnel.

**Products Images**

Western Blot analysis of various cells using PSF2 Monoclonal Antibody