



# CYTF Monoclonal Antibody

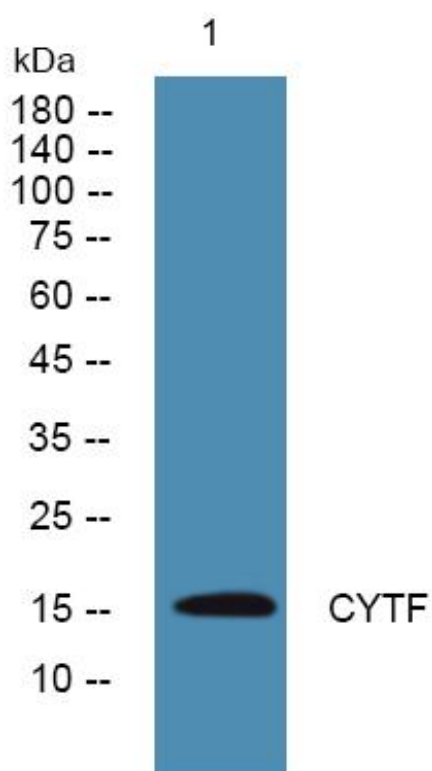
<b>Catalog No</b>	YP-mAb-05502
<b>Isotype</b>	IgG
<b>Reactivity</b>	Human;Rat;Mouse;
<b>Applications</b>	WB
<b>Gene Name</b>	CST7
<b>Protein Name</b>	Cystatin-F (Cystatin-7) (Cystatin-like metastasis-associated protein) (CMAP) (Leukocystatin)
<b>Immunogen</b>	Synthesized peptide derived from part region of human protein
<b>Specificity</b>	CYTF Monoclonal Antibody detects endogenous levels of protein.
<b>Formulation</b>	Liquid in PBS containing 50% glycerol, and 0.02% sodium azide.
<b>Source</b>	Monoclonal, Mouse,IgG
<b>Purification</b>	The antibody was affinity-purified from mouse antiserum by affinity-chromatography using epitope-specific immunogen.
<b>Dilution</b>	WB 1:500-1:2000
<b>Concentration</b>	1 mg/ml
<b>Purity</b>	≥90%
<b>Storage Stability</b>	-20°C/1 year
<b>Synonyms</b>	
<b>Observed Band</b>	15kD
<b>Cell Pathway</b>	Secreted . Cytoplasm .
<b>Tissue Specificity</b>	Primarily expressed in peripheral blood cells and spleen.
<b>Function</b>	function:Inhibits papain and cathepsin L but with affinities lower than other cystatins. May play a role in immune regulation through inhibition of a unique target in the hematopoietic system.,similarity:Belongs to the cystatin family.,subunit:Homodimer; disulfide-linked.,tissue specificity:Primarily expressed in peripheral blood cells and spleen.,
<b>Background</b>	The cystatin superfamily encompasses proteins that contain multiple cystatin-like sequences. Some of the members are active cysteine protease inhibitors, while others have lost or perhaps never acquired this inhibitory activity. There are three inhibitory families in the superfamily, including the type 1 cystatins (stefins), type 2 cystatins and the kininogens. The type 2 cystatin proteins are a class of cysteine proteinase inhibitors found in a variety of human fluids and secretions. This gene encodes a glycosylated cysteine protease inhibitor with a putative role in immune regulation through inhibition of a unique target in the hematopoietic system. Expression of the protein has been observed in various human cancer cell lines established from malignant tumors. [provided by RefSeq, Jul 2008],

**matters needing attention**

Avoid repeated freezing and thawing!

**Usage suggestions**

This product can be used in immunological reaction related experiments. For more information, please consult technical personnel.

**Products Images**

Western Blot analysis of various cells using CYTF Monoclonal Antibody