



# CGL Monoclonal Antibody

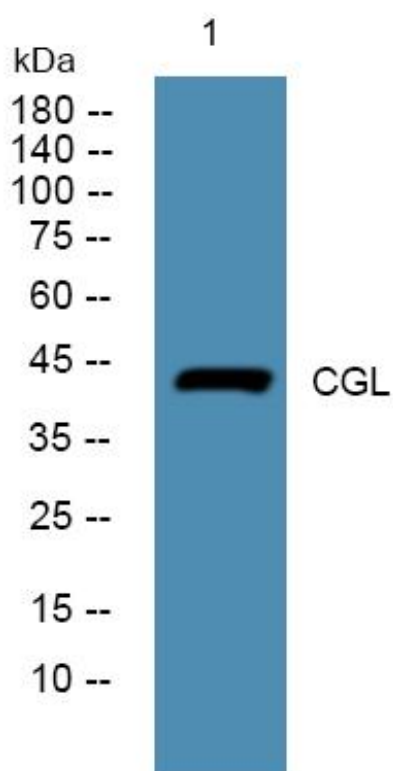
<b>Catalog No</b>	YP-mAb-05499
<b>Isotype</b>	IgG
<b>Reactivity</b>	Human;Mouse
<b>Applications</b>	WB
<b>Gene Name</b>	CTH
<b>Protein Name</b>	Cystathionine gamma-lyase (EC 4.4.1.1) (Cysteine-protein sulfhydrase) (Gamma-cystathionase)
<b>Immunogen</b>	Synthesized peptide derived from part region of human protein
<b>Specificity</b>	CGL Monoclonal Antibody detects endogenous levels of protein.
<b>Formulation</b>	Liquid in PBS containing 50% glycerol, and 0.02% sodium azide.
<b>Source</b>	Monoclonal, Mouse,IgG
<b>Purification</b>	The antibody was affinity-purified from mouse antiserum by affinity-chromatography using epitope-specific immunogen.
<b>Dilution</b>	WB 1:500-1:2000
<b>Concentration</b>	1 mg/ml
<b>Purity</b>	≥90%
<b>Storage Stability</b>	-20°C/1 year
<b>Synonyms</b>	
<b>Observed Band</b>	44kD
<b>Cell Pathway</b>	Cytoplasm.
<b>Tissue Specificity</b>	Highly expressed in liver (PubMed:10727430, PubMed:20305127). Also in muscle and lower expression in most tissues except heart, pituitary gland, spleen, thymus, and vascular tissue, where it is hardly detected (PubMed:20305127).
<b>Function</b>	catalytic activity:L-cystathionine + H(2)O = L-cysteine + NH(3) + 2-oxobutanoate.,cofactor:Pyridoxal phosphate.,disease:Defects in CTH are the cause of cystathioninuria [MIM:219500]. CTH is an autosomal recessive phenotype characterized by abnormal accumulation of plasma cystathionine, leading to increased urinary excretion.,pathway:Amino-acid biosynthesis; L-cysteine biosynthesis; L-cysteine from L-homocysteine and L-serine: step 2/2.,PTM:Phosphorylated upon DNA damage, probably by ATM or ATR.,similarity:Belongs to the trans-sulfuration enzymes family.,subunit:Homotetramer.,
<b>Background</b>	This gene encodes a cytoplasmic enzyme in the trans-sulfuration pathway that converts cystathione derived from methionine into cysteine. Glutathione synthesis in the liver is dependent upon the availability of cysteine. Mutations in this gene cause cystathioninuria. Alternative splicing of this gene results in three transcript variants encoding different isoforms. [provided by RefSeq, Jun 2010],

**matters needing attention**

Avoid repeated freezing and thawing!

**Usage suggestions**

This product can be used in immunological reaction related experiments. For more information, please consult technical personnel.

**Products Images**

Western Blot analysis of various cells using CGL Monoclonal Antibody