



# CSN7A Monoclonal Antibody

<b>Catalog No</b>	YP-mAb-05495
<b>Isotype</b>	IgG
<b>Reactivity</b>	Human;Mouse
<b>Applications</b>	WB
<b>Gene Name</b>	COPS7A CSN7A DERP10
<b>Protein Name</b>	COP9 signalosome complex subunit 7a (SGN7a) (Signalosome subunit 7a) (Dermal papilla-derived protein 10) (JAB1-containing signalosome subunit 7a)
<b>Immunogen</b>	Synthesized peptide derived from part region of human protein
<b>Specificity</b>	CSN7A Monoclonal Antibody detects endogenous levels of protein.
<b>Formulation</b>	Liquid in PBS containing 50% glycerol, and 0.02% sodium azide.
<b>Source</b>	Monoclonal, Mouse,IgG
<b>Purification</b>	The antibody was affinity-purified from mouse antiserum by affinity-chromatography using epitope-specific immunogen.
<b>Dilution</b>	WB 1:500-1:2000
<b>Concentration</b>	1 mg/ml
<b>Purity</b>	≥90%
<b>Storage Stability</b>	-20°C/1 year
<b>Synonyms</b>	
<b>Observed Band</b>	30kD
<b>Cell Pathway</b>	Cytoplasm . Nucleus .
<b>Tissue Specificity</b>	Widely expressed. Expressed at high level in brain, heart and skeletal muscle.
<b>Function</b>	function:Component of the COP9 signalosome complex (CSN), a complex involved in various cellular and developmental processes. The CSN complex is an essential regulator of the ubiquitin (Ubl) conjugation pathway by mediating the deneddylation of the cullin subunits of SCF-type E3 ligase complexes, leading to decrease the Ubl ligase activity of SCF-type complexes such as SCF, CSA or DDB2. The complex is also involved in phosphorylation of p53/TP53, c-jun/JUN, IκBα/NFκB, ITPK1 and IRF8/ICSBP, possibly via its association with CK2 and PKD kinases. CSN-dependent phosphorylation of TP53 and JUN promotes and protects degradation by the Ubl system, respectively.,PTM:Phosphorylated by CK2 and PKD kinases. Phosphorylated upon DNA damage, probably by ATM or ATR.,similarity:Belongs to the CSN7/EIF3M family. CSN7 subfamily.,similarity:Contains 1 PCI domain.,subunit:Component of the CSN comp
<b>Background</b>	This gene encodes a component of the COP9 signalosome, an evolutionarily conserved multi-subunit protease that regulates the activity of the ubiquitin



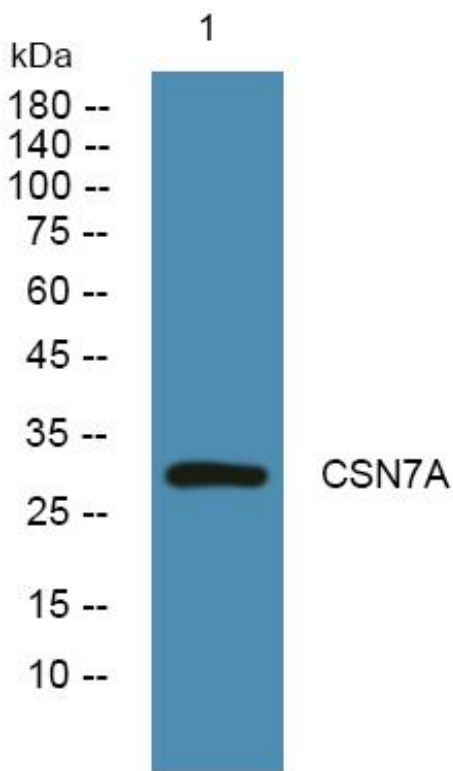
conjugation pathway. Alternatively spliced transcript variants that encode the same protein have been described. [provided by RefSeq, Mar 2014],

**matters needing attention**

Avoid repeated freezing and thawing!

**Usage suggestions**

This product can be used in immunological reaction related experiments. For more information, please consult technical personnel.

**Products Images**

Western Blot analysis of various cells using CSN7A Monoclonal Antibody