

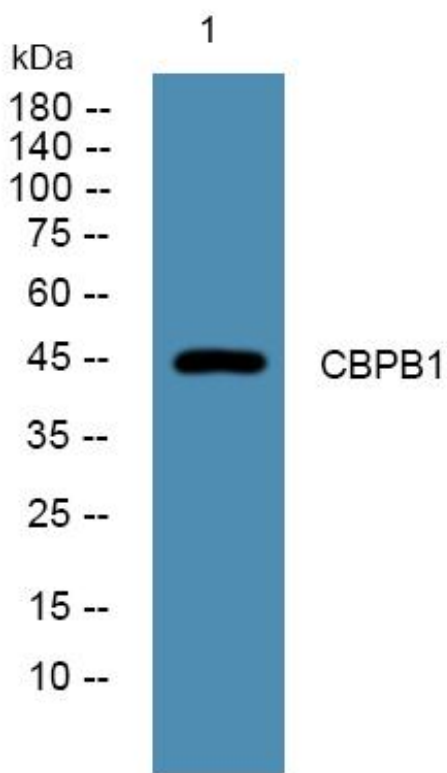


CBPB1 Monoclonal Antibody

Catalog No	YP-mAb-05429
Isotype	IgG
Reactivity	Human;Rat;Mouse;
Applications	WB
Gene Name	CPB1 CPB PCPB
Protein Name	Carboxypeptidase B (EC 3.4.17.2) (Pancreas-specific protein) (PASP)
Immunogen	Synthesized peptide derived from part region of human protein
Specificity	CBPB1 Monoclonal Antibody detects endogenous levels of protein.
Formulation	Liquid in PBS containing 50% glycerol, and 0.02% sodium azide.
Source	Monoclonal, Mouse,IgG
Purification	The antibody was affinity-purified from mouse antiserum by affinity-chromatography using epitope-specific immunogen.
Dilution	WB 1:500-1:2000
Concentration	1 mg/ml
Purity	≥90%
Storage Stability	-20°C/1 year
Synonyms	
Observed Band	45kD
Cell Pathway	Secreted . Zymogen granule lumen .
Tissue Specificity	Pancreas.
Function	catalytic activity:Preferential release of a C-terminal lysine or arginine amino acid.,cofactor:Binds 1 zinc ion per subunit.,similarity:Belongs to the peptidase M14 family.,tissue specificity:Pancreas.,
Background	Three different procarboxypeptidases A and two different procarboxypeptidases B have been isolated. The B1 and B2 forms differ from each other mainly in isoelectric point. Carboxypeptidase B1 is a highly tissue-specific protein and is a useful serum marker for acute pancreatitis and dysfunction of pancreatic transplants. It is not elevated in pancreatic carcinoma. [provided by RefSeq, Jul 2008],
matters needing attention	Avoid repeated freezing and thawing!

**Usage suggestions**

This product can be used in immunological reaction related experiments. For more information, please consult technical personnel.

Products Images

Western Blot analysis of various cells using CBPB1 Monoclonal Antibody