



CHSTE Monoclonal Antibody

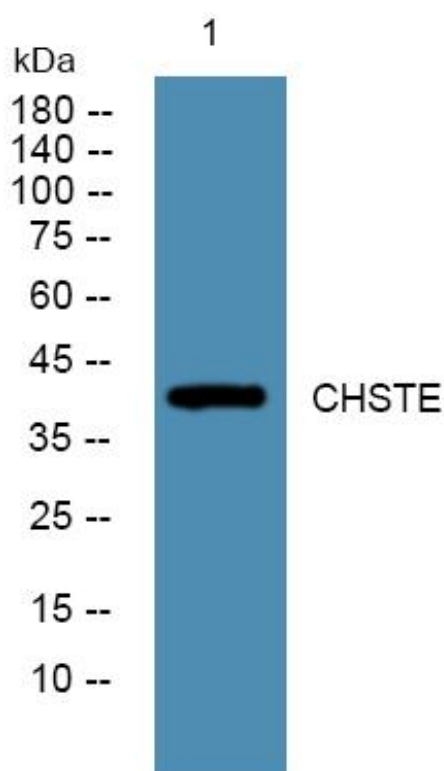
Catalog No	YP-mAb-05423
Isotype	IgG
Reactivity	Human;Mouse
Applications	WB
Gene Name	CHST14 D4ST1 UNQ1925/PRO4400
Protein Name	Carbohydrate sulfotransferase 14 (EC 2.8.2.35) (Dermatan 4-sulfotransferase 1) (D4ST-1) (hD4ST1)
Immunogen	Synthesized peptide derived from part region of human protein
Specificity	CHSTE Monoclonal Antibody detects endogenous levels of protein.
Formulation	Liquid in PBS containing 50% glycerol, and 0.02% sodium azide.
Source	Monoclonal, Mouse,IgG
Purification	The antibody was affinity-purified from mouse antiserum by affinity-chromatography using epitope-specific immunogen.
Dilution	WB 1:500-1:2000
Concentration	1 mg/ml
Purity	≥90%
Storage Stability	-20°C/1 year
Synonyms	
Observed Band	41kD
Cell Pathway	Golgi apparatus membrane ; Single-pass type II membrane protein .
Tissue Specificity	Widely expressed. Expressed at high level in pituitary gland, placenta, uterus and thyroid.
Function	function:Catalyzes the transfer of sulfate to position 4 of the N-acetylgalactosamine (GalNAc) residue of dermatan sulfate. Transfers sulfate to the C-4 hydroxyl of beta1,4-linked GalNAc that is substituted with an alpha-linked iduronic acid (IdoUA) at the C-3 hydroxyl. Transfers sulfate more efficiently to GalNAc residues in -IdoUA-GalNAc-IdoUA- than in -GlcUA-GalNAc-GlcUA-sequences. Has preference for partially desulfated dermatan sulfate. Addition of sulfate to GalNAc may occur immediately after epimerization of GlcUA to IdoUA.,similarity:Belongs to the sulfotransferase 2 family.,tissue specificity:Widely expressed. Expressed at high level in pituitary gland, placenta, uterus and thyroid.,
Background	This gene encodes a member of the HNK-1 family of sulfotransferases. The encoded protein transfers sulfate to the C-4 hydroxyl of N-acetylgalactosamine residues in dermatan sulfate. Mutations in this gene have been associated with adducted thumb-clubfoot syndrome.[provided by RefSeq, Mar 2010],

**matters needing attention**

Avoid repeated freezing and thawing!

Usage suggestions

This product can be used in immunological reaction related experiments. For more information, please consult technical personnel.

Products Images

Western Blot analysis of various cells using CHSTE Monoclonal Antibody