

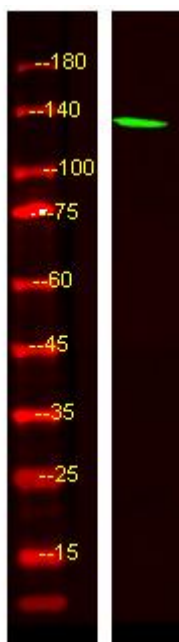


# CMTA2 Monoclonal Antibody

<b>Catalog No</b>	YP-mAb-05407
<b>Isotype</b>	IgG
<b>Reactivity</b>	Human;Mouse
<b>Applications</b>	WB
<b>Gene Name</b>	CAMTA2 KIAA0909
<b>Protein Name</b>	Calmodulin-binding transcription activator 2
<b>Immunogen</b>	Synthesized peptide derived from part region of human protein
<b>Specificity</b>	CMTA2 Monoclonal Antibody detects endogenous levels of protein.
<b>Formulation</b>	Liquid in PBS containing 50% glycerol, and 0.02% sodium azide.
<b>Source</b>	Monoclonal, Mouse,IgG
<b>Purification</b>	The antibody was affinity-purified from mouse antiserum by affinity-chromatography using epitope-specific immunogen.
<b>Dilution</b>	WB 1:500-1:2000
<b>Concentration</b>	1 mg/ml
<b>Purity</b>	≥90%
<b>Storage Stability</b>	-20°C/1 year
<b>Synonyms</b>	
<b>Observed Band</b>	132kD
<b>Cell Pathway</b>	Nucleus .
<b>Tissue Specificity</b>	Detected in brain. Expressed at constant levels throughout the cell cycle in neuroblastoma cell lines.
<b>Function</b>	function:Transcription activator. May act as tumor suppressor.,similarity:Belongs to the CAMTA family.,similarity:Contains 1 CG-1 DNA-binding domain.,similarity:Contains 1 IPT/TIG domain.,similarity:Contains 2 IQ domains.,similarity:Contains 3 ANK repeats.,subunit:May interact with calmodulin .,tissue specificity:Detected in brain. Expressed at constant levels throughout the cell cycle in neuroblastoma cell lines.,
<b>Background</b>	The protein encoded by this gene is a member of the calmodulin-binding transcription activator protein family. Members of this family share a common domain structure that consists of a transcription activation domain, a DNA-binding domain, and a calmodulin-binding domain. The encoded protein may be a transcriptional coactivator of genes involved in cardiac growth. Alternate splicing results in multiple transcript variants.[provided by RefSeq, Jan 2010],
<b>matters needing attention</b>	Avoid repeated freezing and thawing!

**Usage suggestions**

This product can be used in immunological reaction related experiments. For more information, please consult technical personnel.

**Products Images**

Western Blot analysis of various cells using CMTA2 Monoclonal Antibody